

STEP-5e Utility Tool User Manual



For further assistance, contact us:

Tel: 886-2-8752-5088

Web: <http://www.pioneersolution.com/>

Email: support.eu@pioneersolution.com

Drivers: <http://www.pioneerposftp.com/Files/Drivers/19/Printers/>

CONTENTS

OPERATING SYSTEM	3
1 INSTALLATION	4
2 USING PIONEERPOS UTILITY TOOL	6
2.1 Add printer	6
2.2 Modify printer	6
2.3 Delete printer	7
2.4 Connection Test	7
2.5 Functions.....	8
2.5.1 Printer Test	8
2.5.2 Manage Images	9
2.5.3 Code Page Setting	9
2.5.4 Command Test	10
2.5.5 Download Fonts	10
2.5.6 Advanced Settings.....	10

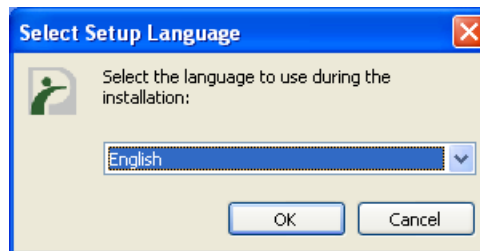
Operating System

PIONEERPOS Utility Tool is applicable to the following operating system:

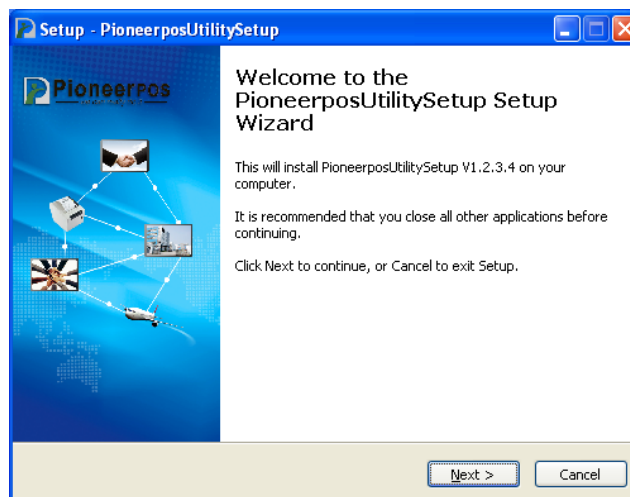
- Microsoft Windows 10 (32 bit/64 bit)
- Microsoft Windows 8 (32 bit/64 bit)
- Microsoft Windows 7 SPI (32 bit/64 bit)
- Microsoft Windows Embedded POSReady 7 (32 bit/64 bit)
- Microsoft Windows XP Professional SP3 (32 bit)

1 Installation

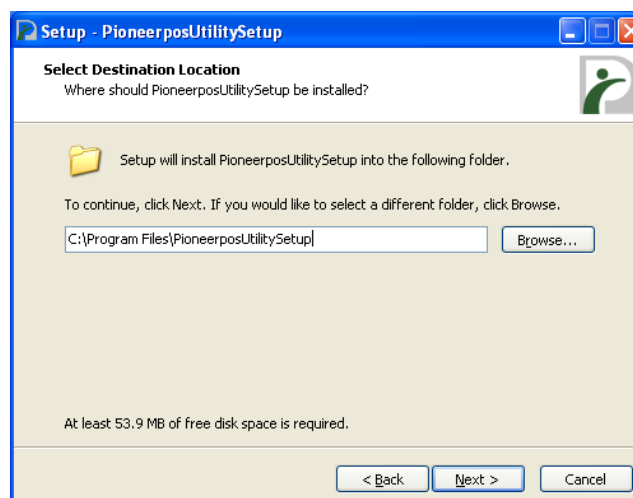
1. Open the installation package.
2. Select the language and click “OK”.



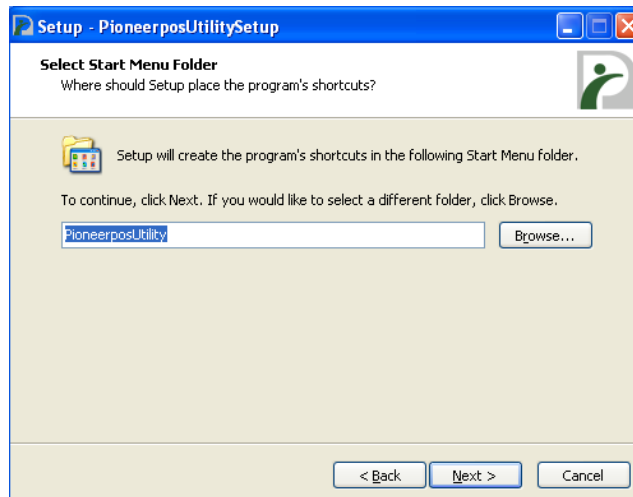
3. Click “Next”.



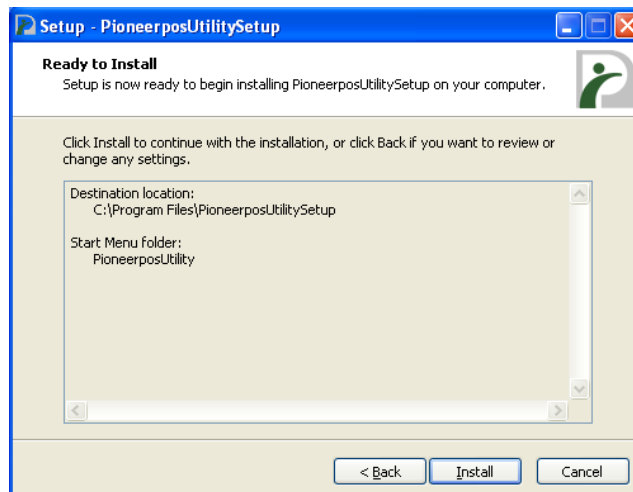
4. Select destination location to install the PIONEERPOS Utility Tool, then click “Next”.



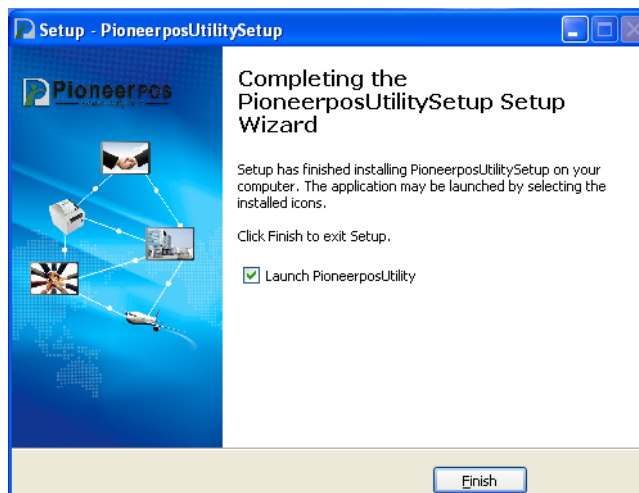
5. Select start menu folder, then click “Next”.



6. Click “Install”.



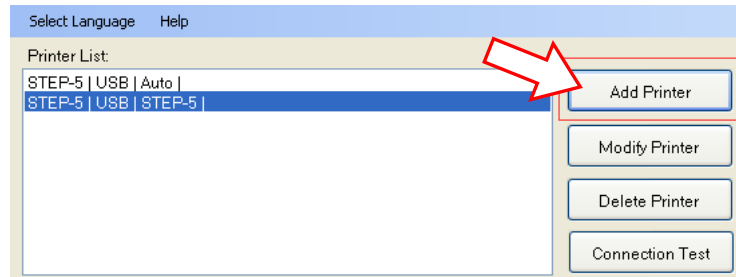
7. Click “Finish”. PIONEERPOS Utility Tool is installed successfully.



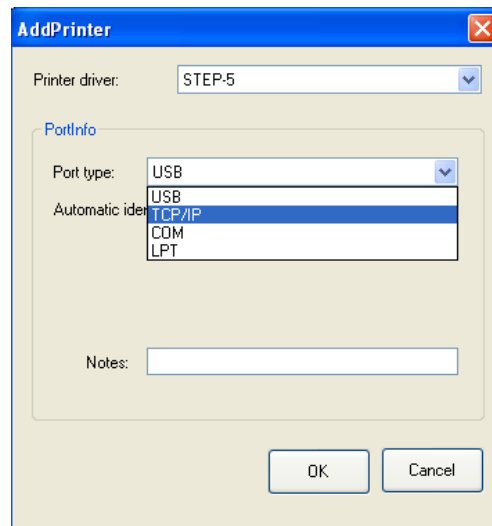
2 Using PIONEERPOS Utility Tool

2.1 Add printer

1. Click “Add Printer”.

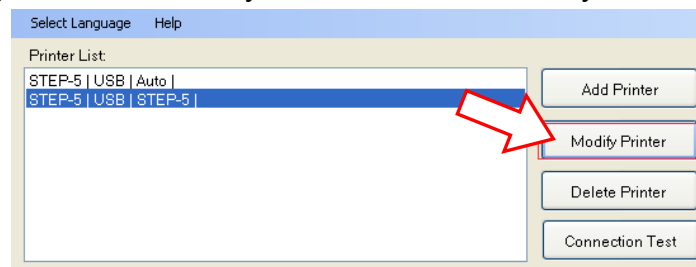


2. Choose the right port. Then click “OK”.

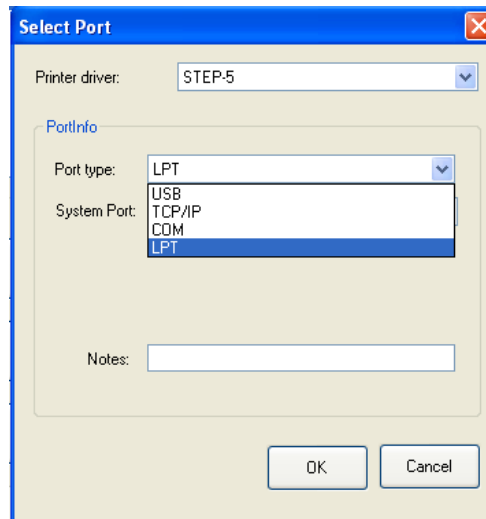


2.2 Modify printer

1. Choose the printer you want to modify in the list. Click “Modify Printer”.

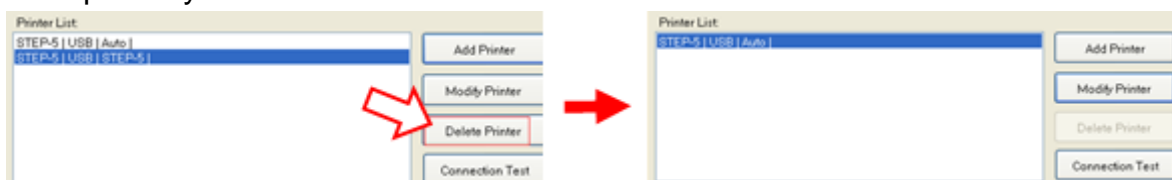


2. Choose new port. Then click “OK”.



2.3 Delete printer

Choose the printer you want to delete in the list and click “Delete Printer”.



2.4 Connection Test

Make sure printer is connected with computer and power on.

Click “Connection Test”. If the connection is successful, it will appear the following window. If the connection is unsuccessful, please connect the printer with computer.



Note:

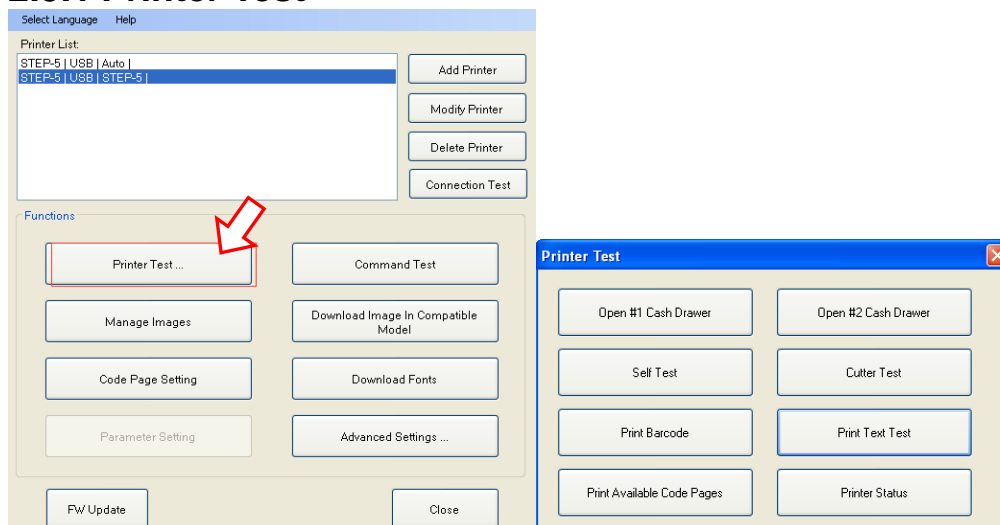
1. Make sure printer is connected with computer and power on.

2. Make sure printer is loaded paper.

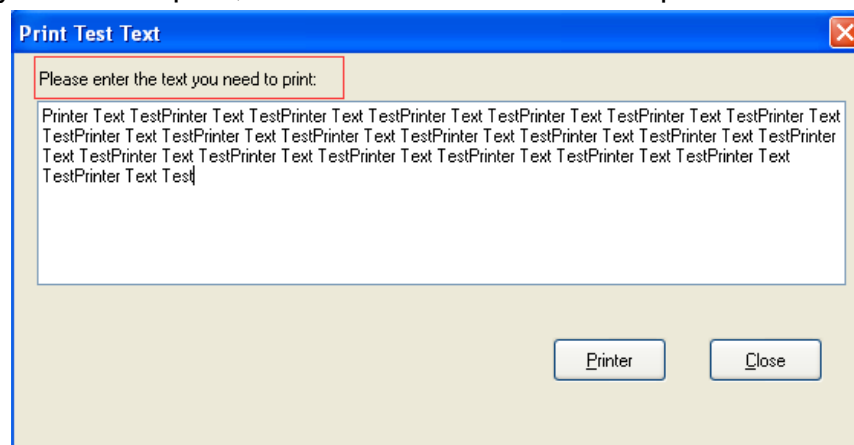
Before using the following function, carry out the “Connection Test” first.

2.5 Functions

2.5.1 Printer Test



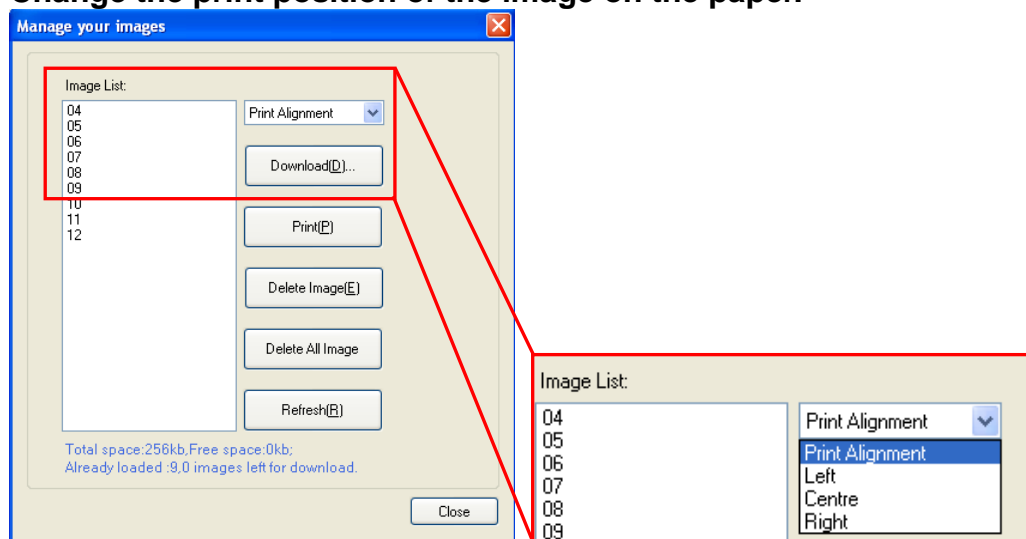
- **Open Cash Drawer**
To test Cash Drawer, connect cash drawer to printer, click on “Open #1 or #2 Cash Drawer” to open the corresponding cash drawer.
- **Self Test**
Click on “Self Test” button, the printer will execute the self-test and print out the test page.
- **Cutter Test**
Click on “Cutter Test”, the printer will auto-cut 10 times.
- **Print Barcode**
Click on “Print Barcode”, the printer will printout sample barcode.
- **Print Text Test**
Type the text you need to print, and click “Printer” to test the print out.



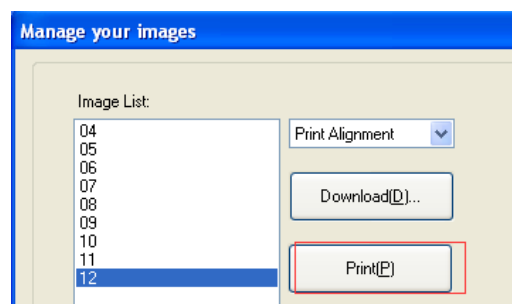
- **Print Available Code Pages**
Click this button, the printer will print all the available code pages of STEP-5e.
- **Printer Status**
This item gives users the status of paper, whether it is out/empty or not.

2.5.2 Manage Images

- **Change the print position of the image on the paper.**

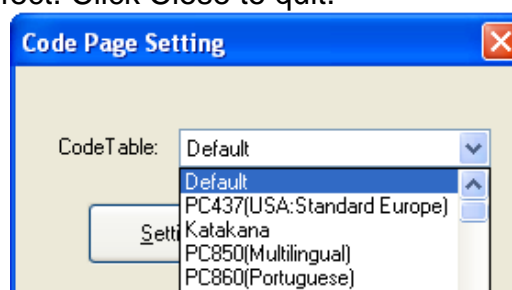


- **Download/Delete Image/ Delete All Image**
Download new image or delete images when click those three buttons.
- **Print**
Highlight the image you want to print, and click “Print”, the printer will print the image you choose.



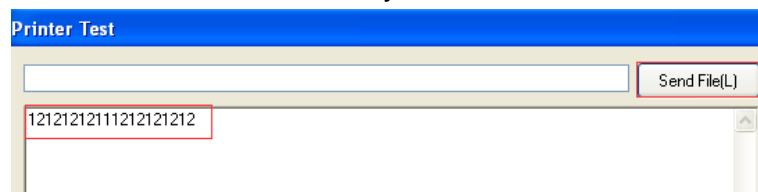
2.5.3 Code Page Setting

Choose the Code Page you want to use from the “Code Table”, after that click “Setting”, the new Code Page will be in effect. Click Close to quit.

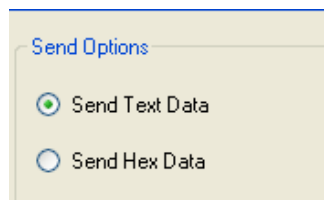


2.5.4 Command Test

1. Printer will print out command or text enter by user.



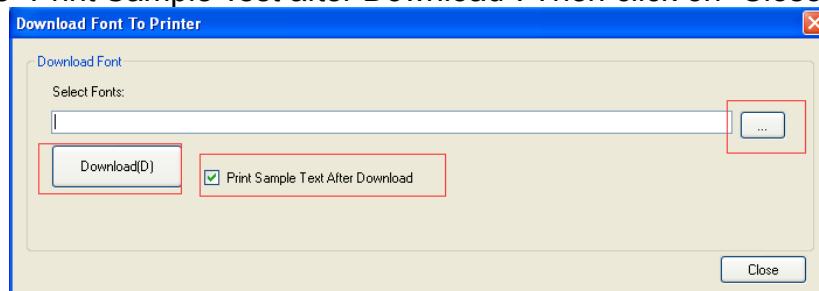
2. "Send Text Data" is the original content you type or content from the file. While "Send Hex Date" is the matching code/letter.



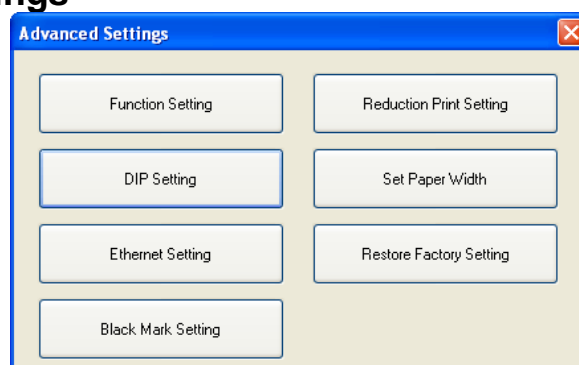
3. Click "Clear", all your typing content clears.
4. After all settings, click "Send" to print. And then Close.

2.5.5 Download Fonts

Select fonts from your computer, then click "Download". The printer will carry out a sample test if you choose "Print Sample Test after Download". Then click on "Close" when done.



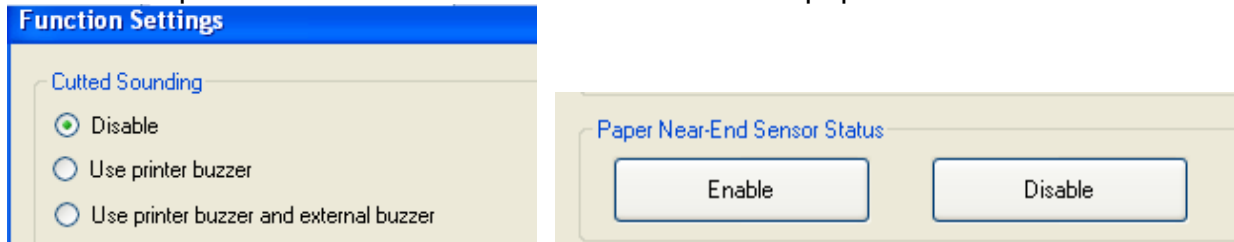
2.5.6 Advanced Settings



1. Function Setting

Includes option to enable or disabled printer buzzer.

Also includes option to enable buzzer when sensor detects paper status is low.

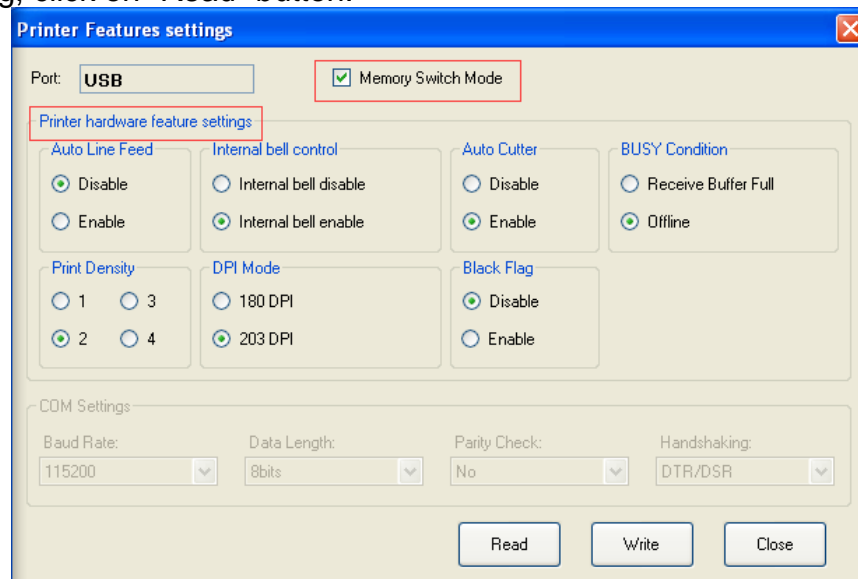


The 'Function Settings' dialog box has a blue title bar. It contains two sections. The first section, 'Cutted Sounding', has three radio button options: 'Disable' (selected), 'Use printer buzzer', and 'Use printer buzzer and external buzzer'. The second section, 'Paper Near-End Sensor Status', has two buttons: 'Enable' and 'Disable'.

Note: If this function is enabled, when the paper nears end, the printer will buzz and the "Error" indicator will be red.

2. DIP Setting

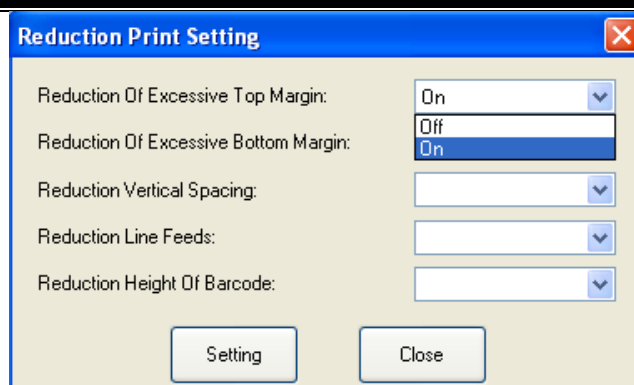
Check the "Memory Switch Mode" box to enable the Memory Switch Mode. To check current DIP switch setting, click on "Read" button.



The 'Printer Features settings' dialog box has a blue title bar and a close button. It contains several sections. At the top, there is a 'Port' dropdown set to 'USB' and a checked 'Memory Switch Mode' checkbox. Below this is a section titled 'Printer hardware feature settings' which contains several sub-sections: 'Auto Line Feed' (Disable selected), 'Internal bell control' (Internal bell enable selected), 'Auto Cutter' (Enable selected), 'BUSY Condition' (Offline selected), 'Print Density' (2 selected), 'DPI Mode' (203 DPI selected), and 'Black Flag' (Disable selected). At the bottom, there is a 'COM Settings' section with dropdowns for 'Baud Rate' (115200), 'Data Length' (8bits), 'Parity Check' (No), and 'Handshaking' (DTR/DSR). At the very bottom are three buttons: 'Read', 'Write', and 'Close'.

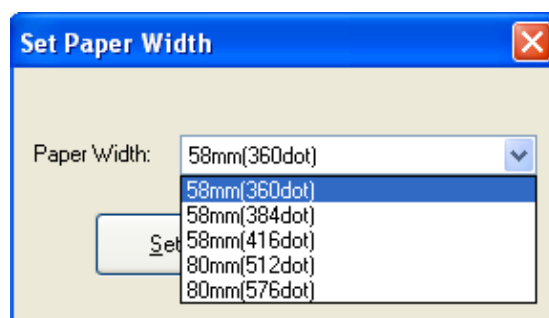
3. Reduction Print Setting

Reduction Print Setting is an option for user to save thermal paper during print out. To enable the option, select "on", click on "Setting" button then click on "Close" button.



4. Set Paper Width

Option to choose the paper width and resolution.



5. Restore Factory Setting

Restore the printer to original factory settings.