

ST-EP4 Windows Printer Driver

Install Manual

Overview

An overview of the Printer Driver and the description of operating environment.

Installation and Setup

Descriptions from installation of the Printer Driver to making prints with the printer.

Silent Installation

Descriptions of the silent install.

Cautions

- No part of this document may be reproduced, stored in a retrieval system, or transmitted in any form or by any means, electronic, mechanical, photocopying, recording, or otherwise, without the prior written permission of PioneerPOS Inc.
- The contents of this document are subject to change without notice. Please contact us for the latest information.
- While every precaution has taken in the preparation of this document, PioneerPOS Inc. and its suppliers assumes no responsibility for errors or omissions.
- Neither is any liability assumed for damages resulting from the use of the information contained herein.
- Neither PioneerPOS Inc. nor its suppliers shall be liable to the purchaser of this product or third parties for damages, losses, costs, or expenses incurred by the purchaser or third parties as a result of: accident, misuse, or abuse of this product or unauthorized modifications, repairs, or alterations to this product, or (excluding the U.S.) failure to strictly comply with PioneerPOS Inc. or its suppliers' operating and maintenance instructions.
- PioneerPOS Inc. and its suppliers shall not be liable against any damages or problems arising from the use of any options or any consumable products other than those designated by PioneerPOS Inc.

Trademarks

EPSON® and ESC/POS® are registered trademarks of Seiko Epson Corporation in the U.S. and other countries.

Microsoft®, Windows®, Windows Vista® and Windows Server® are either registered trademarks or trademarks of Microsoft Corporation in the United States and other countries.

ESC/POS® Command System

EPSON has been taking industry's initiatives with its own POS printer command system (ESC/POS). ESC/POS has a large number of commands including patented ones. Its high scalability enables users to build versatile POS systems. The system is compatible with all types of EPSON POS printers (excluding the TM-C100) and displays. Moreover, its flexibility makes it easy to upgrade the future. The functionality and the user-friendliness is valued around the world.

For Safety

Key to Symbols

The symbols in this manual are identified by their level of importance, as defined below. Read the following carefully before handling the product.

CAUTION

Provides information that must be observed to avoid damage to your equipment or a malfunction.

NOTE

Provides important information and useful tips.

Restriction of Use

When this product is used for applications requiring high reliability/safety such as transportation devices related to aviation, rail, marine, automotive etc.; disaster prevention devices; various safety devices etc; or functional/precision devices etc, you should use this product only after giving consideration to including fail-safes and redundancies into your design to maintain safety and total system reliability. Because this product was not intended for use in applications requiring extremely high reliability/safety such as aerospace equipment, main communication equipment, nuclear power control equipment, or medical equipment related to direct medical care etc, please make your own judgment on this product's suitability after a full evaluation.

About this Manual

Aim of the Manual

This manual is aimed to provide the necessary information to install the ST-EP4 Windows Printer Driver.

Manual Content

The manual is made up of the following sections:

| | |
|-----------|--|
| Chapter 1 | Overview |
| Chapter 2 | Installation and Setup |
| Chapter 3 | Silent Installation |

Contents

| | |
|----------------------------|---|
| ■ For Safety | 3 |
| Key to Symbols | 3 |
| ■ Restriction of Use | 3 |
| ■ About this Manual | 4 |
| Aim of the Manual..... | 4 |
| Manual Content | 4 |
| ■ Contents | 5 |

Overview 7

| | |
|---|----|
| ■ Features | 7 |
| Manual organization | 7 |
| ■ Operating Environment | 8 |
| Computer | 8 |
| OS | 8 |
| .NET Framework Version | 8 |
| Interface | 8 |
| Application..... | 8 |
| ■ Differences Depending on the OS | 9 |
| ■ Restrictions | 10 |

Installation and Setup..... 11

| | |
|------------------------------|----|
| ■ Installation methods | 11 |
| ■ Minimum Install..... | 12 |
| Installation Flow | 12 |
| Installation..... | 12 |
| Connecting the Printer..... | 18 |
| Print Test Page | 19 |
| ■ Standard Install | 20 |
| Installation Flow | 20 |
| Installation..... | 20 |
| ■ Uninstallation..... | 24 |
| ■ Custom Install..... | 26 |
| Installation Flow | 26 |
| Installation..... | 26 |

| | |
|---|----|
| ■ Maintenance after Installing the Printer Driver | 31 |
| Adding the printer driver | 31 |
| Uninstalling the printer driver..... | 34 |
| Replacing a printer | 35 |
| Changing the port settings of the printer driver | 36 |

Silent Installation39

| | |
|---|----|
| ■ What Is a Silent Installation? | 39 |
| Flow of the Silent Installation | 40 |
| ■ Setting the Printer Driver Environment To Be Copied | 41 |
| Printer Driver Setting | 41 |
| ■ Creating a Package or Script file | 42 |
| ■ Executing the Silent Installation | 46 |
| How to execute the Silent Installation..... | 46 |
| Checking the Installation Result | 47 |
| Command Options | 47 |

Overview

Features

ST-EP4 Windows Printer Driver is a Windows printer driver.

The Printer Driver environment that is already set up can be restored (silent install) on another computer.

Other features, see the "ST-EP4 Windows Printer Driver Printer Manual."

Manual organization

Install Manual

This manual. Descriptions of the procedures from installing the Printer Driver to performing test print, adding printer drivers, and the silent install which is an automated Printer Driver installation.

Printer Manual

Descriptions of how to use the Printer Driver and its functions.

Descriptions of the specifications.

Operating Environment

Computer

Any PC/AT compatible machine running any of the following Windows systems.

OS

- Microsoft Windows 7 SP1 (32bit/64bit)
- Microsoft Windows Vista SP2 (32bit/64bit) English version
- Microsoft Windows XP Professional SP3 (32bit) English version
- Microsoft Windows Embedded POSReady 2009

.NET Framework Version

For .NET environment, use in the following environment.

- .NET Framework 2.0 or later.
- For Windows Vista, .NET Framework 3.0 or later is installed.

Interface

The following interfaces are supported with the Printer Driver.

| Interface | Descriptions |
|-----------|--|
| Parallel | - |
| Serial | - |
| USB | USB 2.0 compliant (Full-Speed 12 Mbps operation. High-Speed operation is not possible.) |
| Ethernet | 10/100 Base-T |

Application

The Printer Driver supports direct printing from the Windows applications. No programming is required for printing directly from commercial applications, such as word processing or spread sheet.

Differences Depending on the OS

The content of the descriptions of some operations in this book may be different depending on the OS. See the following.

| Item | Description |
|--|--|
| Screens shown | Screens in Windows 7 are used for the descriptions in this manual. |
| Confirmation and setting of the printer driver | Windows 7 (Start) - (Control Panel) - (Hardware and Sound) - (Devices and Printers) Right click the printer driver, and select the (Printer properties). Windows Vista (Start) - (Control Panel) - (Hardware and Sound) - (Printers) Right click the printer driver, and select the (Properties). Windows XP (Start) - (Control Panel) - (Printers and Faxes) Right click the printer driver, and select the (Properties). |
| Add a shared printer | Windows 7 (Start) - (Control Panel) - (Hardware and Sound) - (Add a printer) Windows Vista (Start) - (Control Panel) - (Hardware and Sound) - (Add a printer) Windows XP (Start) - (Control Panel) - (Add a printer) |
| Uninstall a program | Windows 7 (Start) - (Control Panel) - (Uninstall a program) Windows Vista (Start) - (Control Panel) - (Uninstall a program) Windows XP (Start) - (Control Panel) - (Add or Remove Programs) |



Restrictions

- The maximum number of printers that can be connected simultaneously through a USB connection is 8.
- If you use a connection with interface conversion connector or interface expanded board, the operation is not guaranteed.

Installation and Setup

This chapter describes the procedures from the installation to execution of test print. The uninstallation procedure ([page 24](#)) and various maintenance procedures after installation ([page 31](#)) are also provided.



- Install with Administrator privileges.
- Do not connect the printer, until installation of the Printer Driver completes.
- Close all running applications before the installation.

Installation methods

The following methods are available to install the Printer Driver.

- **Minimum Installation**

[page 12](#)

This recommended installation option installs minimum features required for using the printer. This method reduces the number of files to be installed and the time for installation.

- **Standard Installation**

[page 20](#)

This installation option installs all features Printer Driver supports. The printer drivers for both 32 bit and 64 bit version OS are installed.

- **Custom installation**

[page 26](#)

This installation option allows you to select and install only certain feature(s).

You can select the 32 bit printer driver or 64 bit printer driver according to your OS environment.

This document also describes following topics which can be performed after installation.

- **Silent installation**

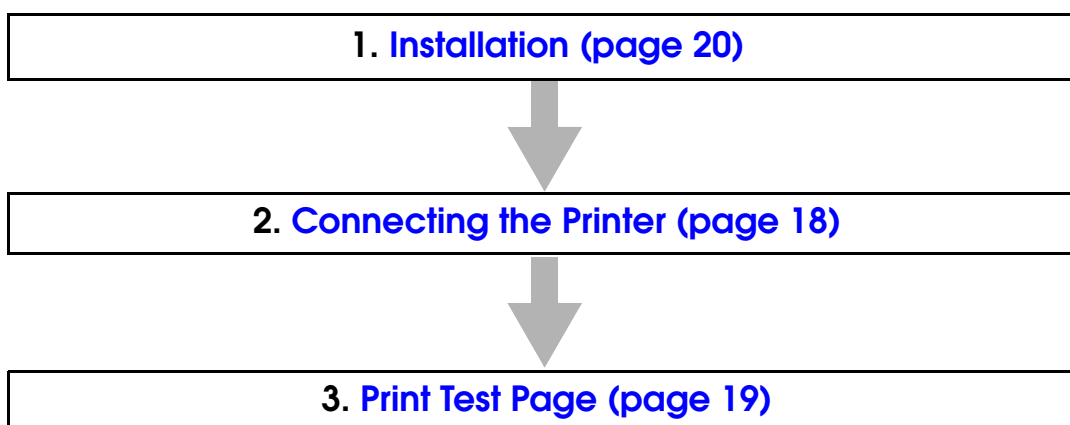
[page 39](#)

This allows you to copy the Printer Driver environment to other computers.

Minimum Install

This recommended installation option installs minimum features required for using the printer. This method reduces the number of files to be installed and the time for installation.

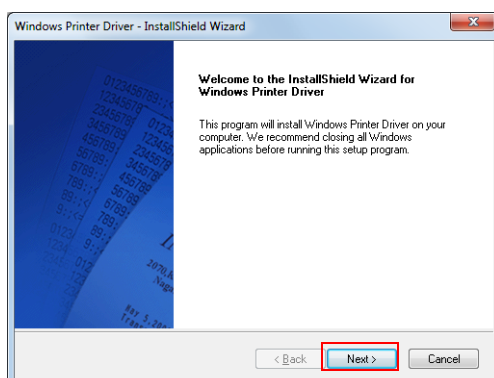
Installation Flow



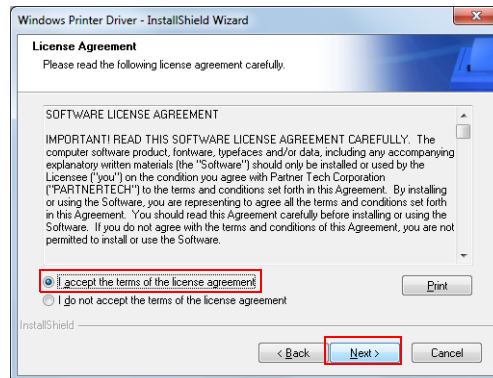
Installation

Follow the procedure below.

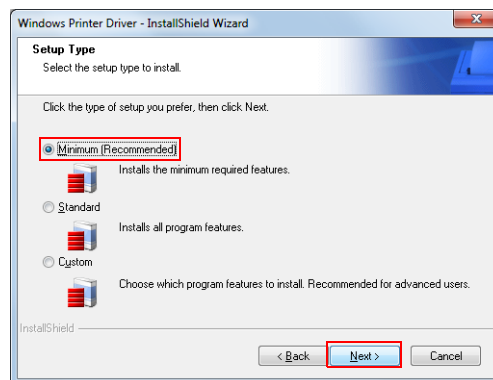
- 1 Run the ST_EP4PrinterDriver.exe file included with this product. When the “User Account Control” screen appears, click the [Yes] button.
- 2 The “InstallShield Wizard” screen appears. Click the (Next) button.



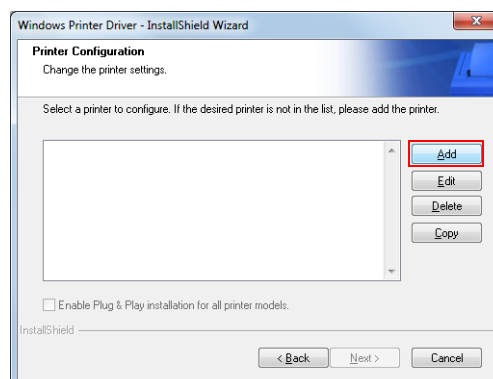
- 3** The “License Agreement” screen appears. Read the content and select “I accept the terms of the license agreement”. Then click the (Next) button.



- 4** The “Setup Type” screen appears. Select "Minimum (Recommended)", then click the (Next) button.



- 5** The “Printer Configuration” screen appears. Click the (Add) button to select a model for which the driver is installed.

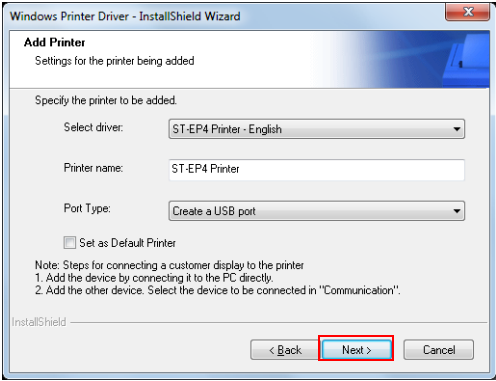


6 The “Add Printer” screen appears. Select the printer driver from the list of “Select Driver”.



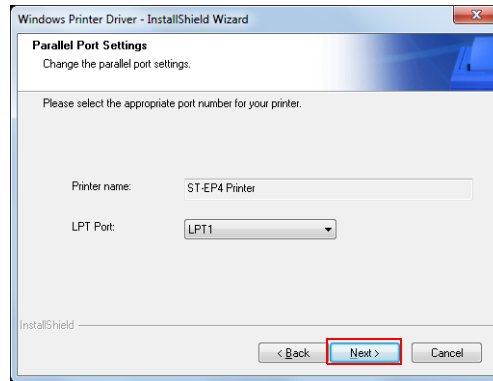
The language can be checked in “Resident Character” that is printed in the self test. To start the self test, turn on the power button while holding down the FEED button with the paper roll cover closed. Continue holding down the FEED button until printing starts.

7 Configure the printer driver and port to use, and click the (Next) button.



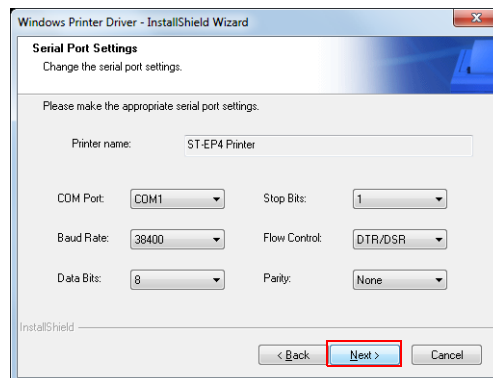
| Setting | Description |
|------------------------|---|
| Printer name | The printer driver name. This is changeable. Do not use Unicode/2-byte characters for the name. |
| Port Type | Select the type of interface to connect the computer and printer. Create a Parallel port: Proceed to Step 8. Create a Serial port: Proceed to Step 9. Create an Ethernet port: Proceed to Step 10. Create a USB port: Proceed to Step 11. |
| Set as Default Printer | Check when configuring the printer as that normally used from the Windows applications. |

- 8** The “Parallel Port Settings” screen appears. Configure the settings of the Parallel port and click the (Next) button. Proceed to Step 11.



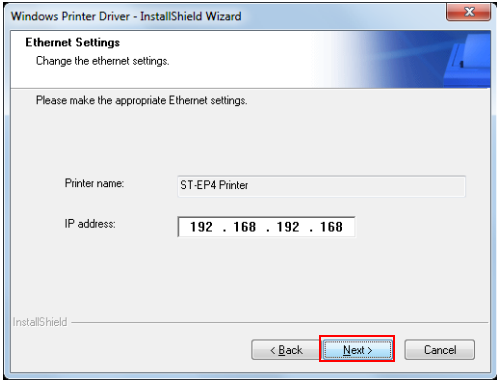
| Setting | Description |
|--------------|--|
| Printer name | The printer name you entered at Step 7 is displayed. This cannot be changed. |
| LPT Port | Specify the number of parallel port used for connecting the printer. Usually, the port number is automatically displayed and no setting is required. |

- 9** The “Serial Port Settings” screen appears. Configure the settings of the Serial port and click the (Next) button. Proceed to Step 11.



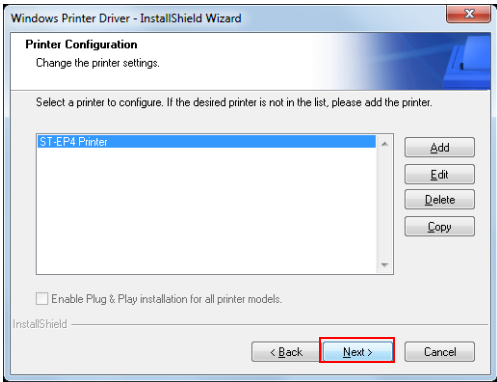
| Setting | Description |
|--------------|--|
| Printer name | The printer name you entered at Step 7 is displayed. This cannot be changed. |
| COM Port | Specify the number of serial port used for connecting the printer. |
| Baud Rate | Specify the baud rate. |
| Data Bits | Specify the data bits. |
| Stop Bits | Specify the stop bits. |
| Flow Control | Specify the method of data flow between the computer and the printer. |
| Parity | Specify the parity. |

- 10** The “Ethernet Settings” screen appears. Configure the IP Address of the printer and click the (Next) button. Proceed to Step 11.

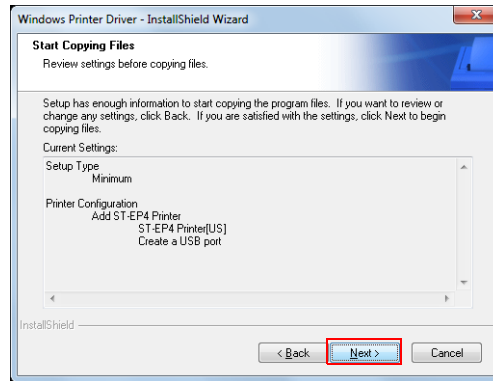


| Setting | Description |
|--------------|---|
| Printer name | The printer name you entered at Step 7 is displayed. This cannot be changed. |
| IP address | Enter the printer IP address. To find the information about IP Address of the printer, see the “ST-EP4 Network Setting Utility User's Manual.” |

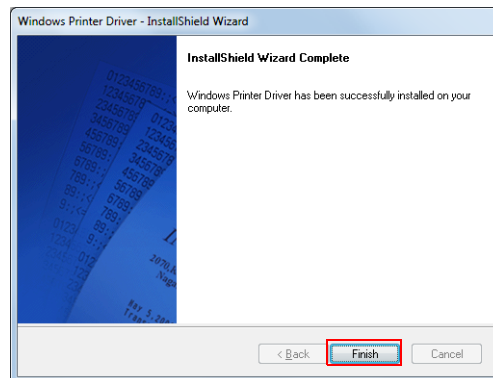
- 11** The display returns to the “Printer Configuration” screen. All the printer drivers, configured between Step 7 to Step 10, appear in the list. To install multiple printer drivers, repeat Step 6 to Step 10. To install the same printer driver multiple times, click the (Copy) button. When the settings of the printer drivers are finished, click the (Next) button.



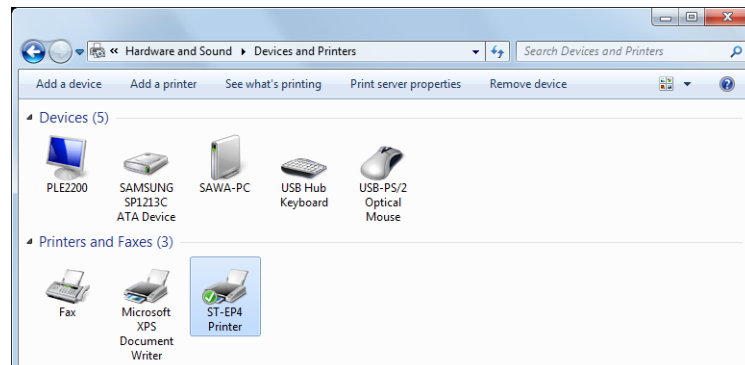
- 12** The “Start Copying Files” screen appears. See “Current Settings” to confirm the installation settings and then click the (Next) button.



- 13** The Printer Driver is installed.
- 14** The “InstallShield Wizard Complete” screen appears. Click the (Finish) button to finish installation.



- 15** In (Start) - (Control Panel) - (Hardware and Sound) - (Devices and Printers), check that the specified printer driver is correctly installed. ([Reference page of other OS.](#))



Connecting the Printer

Connect the printer.



- The maximum number of printers that can be simultaneously connected to multiple computers is 8.
- Turn off the power of the printer and wait for more than 5 seconds before turning on the power.

Parallel (LPT) connection

When the printer is connected, the "New Hardware Detected. EPSON TM-P2.01" screen appears then the "Found New Hardware Wizard" screen. In this case, perform the following steps.

- 1 Click the (Next) button to search for the driver.
- 2 The driver is found and installed.

Serial (COM) connection

When using the serial connection, make sure the printer settings match the printer driver port settings (BaudRate/DataBits/Parity/StopBits/FlowControl).

Ethernet (10/100 Base-T) connection

When using Ethernet connection, check the IP address setting. To configure the IP address, use the Network Setting Utility. For details, see the "ST-EP4 Network Setting Utility User's Manual."

USB connection

Do not connect the printer to the computer before installing the Printer Driver. In case you connect the printer first, delete the port drivers and reinstall the printer drivers without connecting the printer.



USB device requirements

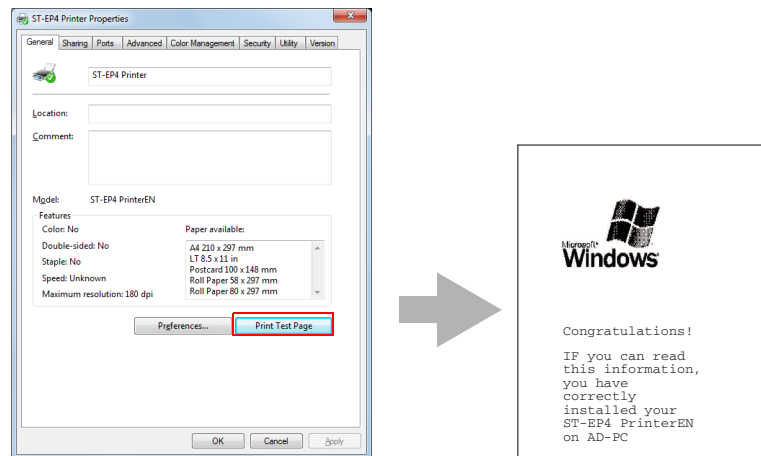
- Maximum USB cable length is 5m, and 5 cascaded hubs maximum.
- Use the USB cable and the USB hubs compliant with USB2.0 specification (12Mbps).

Print Test Page

After installing the Printer Driver, execute test print to check if the Printer Driver is properly installed and work normally.

Perform Print Test Page in the following procedures.

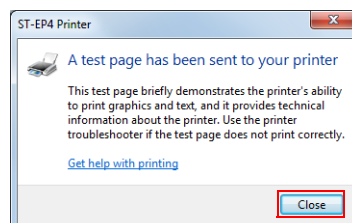
- 1 Open the Printers screen from (Start) - (Control Panel). Right click the printer driver you have installed and select (Properties) ([Reference page of other OS.](#)).
- 2 The Properties screen of the printer appears. Click the (Print Test Page) button to start test printing.



NOTE

- Print Test Page of the Printer Driver does not print all the data, unlike normal Print Test Page does.
- The Print Test Page prints characters and images as an image. The data volume is large for serial connection and may take longer to print compared with other interfaces.

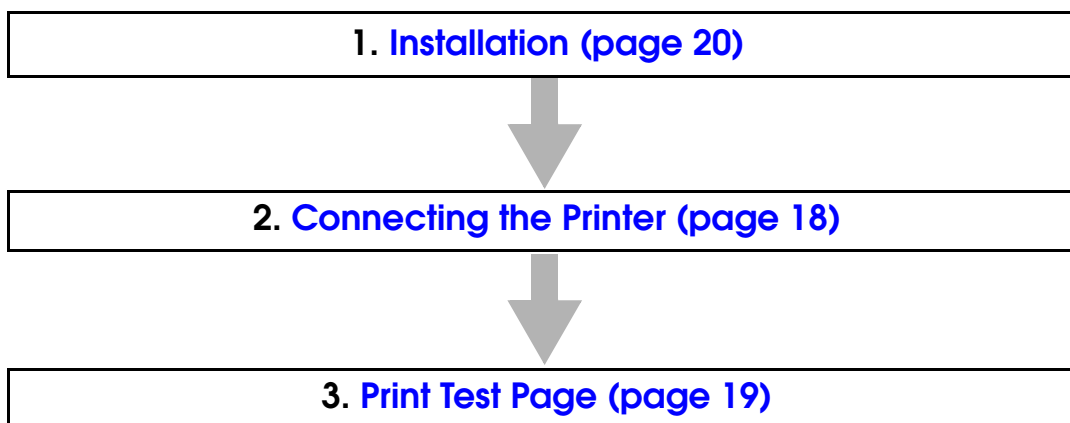
- 3 The following screen appears. If the test print was output correctly, click the (Close) button. If the test print was not output correctly, click the (Troubleshoot...) button and perform troubleshooting in accordance with the Windows message.



Standard Install

This installation option installs all features Printer Driver supports. Additionally, printer drivers for all models can be installed through Plug and Play feature.

Installation Flow

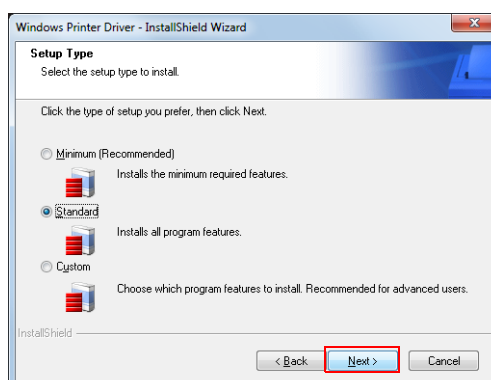


Installation

Follow the procedure below.

- 1** Run the ST_EP4PrinterDriver.exe file included with this product.
When the “User Account Control” screen appears, click the [Yes] button.
- 2** The “InstallShield Wizard” screen appears. Click the (Next) button.
- 3** The “License Agreement” screen appears. Read the content and select “I accept the terms of the license agreement”. Then click the (Next) button.

- 4** The “Setup Type” screen appears. Select “Standard”, then click the (Next) button.



- 5** The “Printer Configuration” screen appears. Click the (Add) button to select a model for which the driver is installed.
- 6** The “Add Printer” screen appears. Select the printer driver from the list of “Select Driver”.



The language can be checked in “Resident Character” that is printed in the self test. To start the self test, turn on the power button while holding down the FEED button with the paper roll cover closed. Continue holding down the FEED button until printing starts.

- 7** Configure the printer driver and port to use, and click the (Next) button.

| Setting | Description |
|------------------------|---|
| Printer name | The printer driver name. This is changeable. Do not use Unicode/2-byte characters for the name. |
| Port Type | Select the type of interface to connect the computer and printer. Create a Parallel port: Proceed to Step 8. Create a Serial port: Proceed to Step 9. Create an Ethernet port: Proceed to Step 10. Create a USB port: Proceed to Step 11. |
| Set as Default Printer | Check when configuring the printer as that normally used from the Windows applications. |

- 8** The “Parallel Port Settings” screen appears. Configure the settings of the Parallel port and click the (Next) button. Proceed to Step 11.

| Setting | Description |
|--------------|--|
| Printer name | The printer name you entered at Step 7 is displayed. This cannot be changed. |
| LPT Port | Specify the number of parallel port used for connecting the printer. Usually, the port number is automatically displayed and no setting is required. |

- 9** The “Serial Port Settings” screen appears. Configure the settings of the Serial port and click the (Next) button. Proceed to Step 11.

| Setting | Description |
|--------------|--|
| Printer name | The printer name you entered at Step 7 is displayed. This cannot be changed. |
| COM Port | Specify the number of serial port used for connecting the printer. |
| Baud Rate | Specify the baud rate. |
| Data Bits | Specify the data bits. |
| Stop Bits | Specify the stop bits. |
| Flow Control | Specify the method of data flow between the computer and the printer. |
| Parity | Specify the parity. |

- 10** The “Ethernet Settings” screen appears. Configure the IP Address of the printer and click the (Next) button. Proceed to Step 11.

| Setting | Description |
|--------------|---|
| Printer name | The printer name you entered at Step 7 is displayed. This cannot be changed. |
| IP address | Enter the printer IP address. To find the information about IP Address of the printer, see the “ST-EP4 Network Setting Utility User's Manual.” |

- 11** The display returns to the “Printer Configuration” screen. All the printer drivers, configured between Step 7 to Step 10, appear in the list. To install multiple printer drivers, repeat Step 6 to Step 10. To install the same printer driver multiple times, click the (Copy) button. When the settings of the printer drivers are finished, click the (Next) button.

- 12** The “Start Copying Files” screen appears. See “Current Settings” to confirm the installation settings and then click the (Next) button.
- 13** The Printer Driver is installed.
- 14** The “InstallShield Wizard Complete” screen appears. Click the (Finish) button to finish installation.
- 15** In (Start) - (Control Panel) - (Hardware and Sound) - (Devices and Printers), check that the specified printer driver is correctly installed. ([Reference page of other OS.](#))

Uninstallation

Uninstall everything related to Printer Driver (port drivers, printer drivers, and so on).



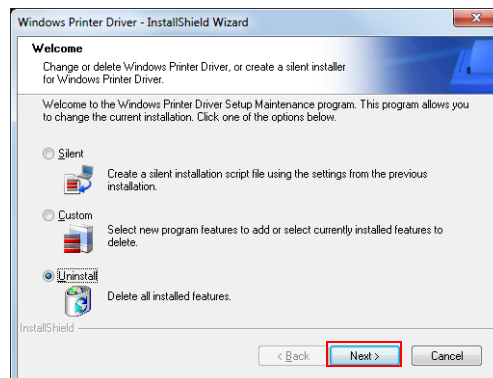
The Printer Driver has the silent uninstallation function that enables you to uninstall without displaying any screens. For more details, see ["/uninstall : Silent Uninstallation" on page 48.](#))



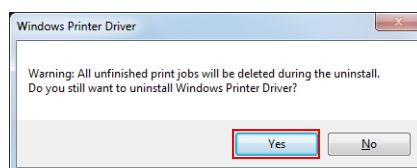
Do not uninstall printer drivers directly from [Start] - [Control Panel] - [Hardware and Sound] - [Printers] ([Reference page of other OS.](#)). Even if the icon (the printer driver) disappeared from the screen, Printer Driver is not uninstalled. To uninstall the printer driver, see ["Uninstalling the printer driver" on page 34.](#)

Follow the procedure below to uninstall the Printer Driver.

- 1 End all the other operations on the computer.
- 2 Select from (Start) - (All Programs) - (Thermal Printer) - (ST-EP4) - (Windows Printer Driver) and open (Change or delete Windows Printer Driver, or create a silent installer for Windows Printer Driver.)
- 3 The "Welcome" screen appears. Select "Uninstall", then click the (Next) button.

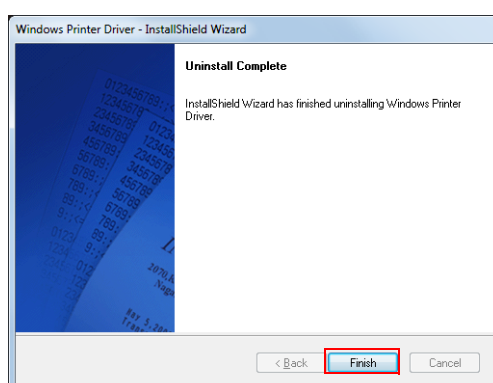


- 4** The uninstallation confirmation screen appears. Click the (Yes) button.



- 5** The Printer Driver is uninstalled.

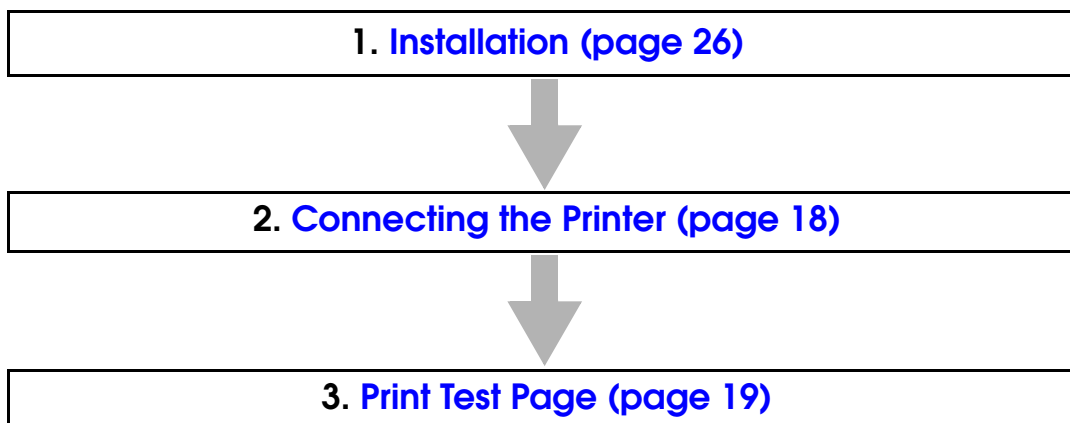
- 6** The "Uninstall Complete" screen appears. Click the (Finish) button to finish uninstallation.



Custom Install

In the custom installation, you can select certain features to install.

Installation Flow

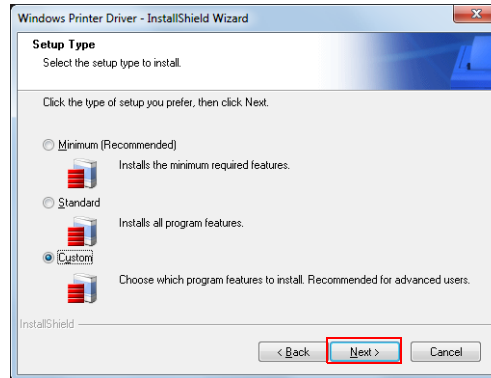


Installation

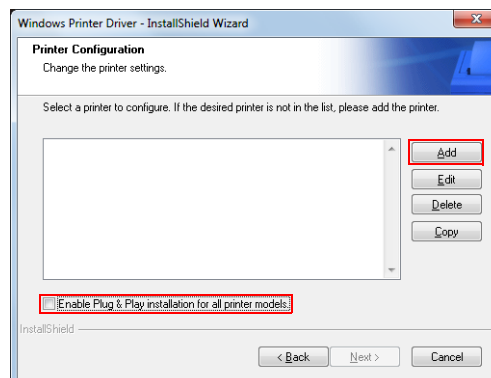
Follow the procedure below.

- 1** Run the ST_EP4PrinterDriver.exe file included with this product. When the “User Account Control” screen appears, click the [Yes] button.
- 2** The “InstallShield Wizard” screen appears. Click the (Next) button.
- 3** The “License Agreement” screen appears. Read the content and select “I accept the terms of the license agreement”. Then click the (Next) button.

- 4** The “Setup Type” screen appears. Then select “Custom” and click the (Next) button.



- 5** The “Select Features” screen appears. Click the (Add) button. To install a driver through Plug and Play feature after installing the Printer Driver, check “Enable Plug & Play installation for all printer models.” and click the (Next) button to go to Step.



| Setting | | Description |
|---|---------------------|--|
| Enable Plug & Play installation for all printer models. | Unchecked (default) | Only drivers for selected models are installed. |
| | Checked | Drivers for all models are installed. You can install other models' drivers through Plug and Play feature after installing the Printer Driver. |

- 6** The “Add Printer” screen appears. Select the printer driver from the list of “Select Driver”.



The language can be checked in “Resident Character” that is printed in the self test. To start the self test, turn on the power button while holding down the FEED button with the paper roll cover closed. Continue holding down the FEED button until printing starts.

7 Configure the printer driver and port to use, and click the (Next) button.

| Setting | Description |
|------------------------|---|
| Printer name | The printer driver name. This is changeable. Do not use Unicode/2-byte characters for the name. |
| Port Type | Select the type of interface to connect the computer and printer. Create a Parallel port: Proceed to Step 8. Create a Serial port: Proceed to Step 9. Create an Ethernet port: Proceed to Step 10. Create a USB port: Proceed to Step 11. |
| Set as Default Printer | Check when configuring the printer as that normally used from the Windows applications. |

8 The "Parallel Port Settings" screen appears. Configure the settings of the Parallel port and click the (Next) button. Proceed to Step 11.

| Setting | Description |
|--------------|--|
| Printer name | The printer name you entered at Step 7 is displayed. This cannot be changed. |
| LPT Port | Specify the number of parallel port used for connecting the printer. Usually, the port number is automatically displayed and no setting is required. |

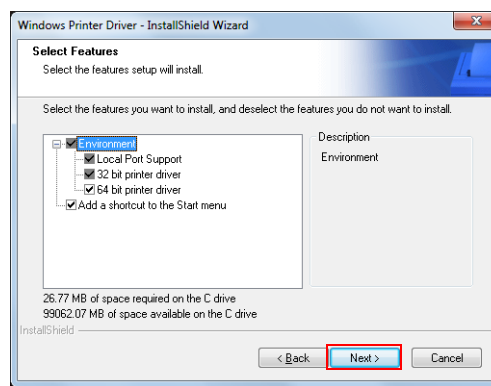
9 The "Serial Port Settings" screen appears. Configure the settings of the Serial port and click the (Next) button. Proceed to Step 11.

| Setting | Description |
|--------------|--|
| Printer name | The printer name you entered at Step 7 is displayed. This cannot be changed. |
| COM Port | Specify the number of serial port used for connecting the printer. |
| Baud Rate | Specify the baud rate. |
| Data Bits | Specify the data bits. |
| Stop Bits | Specify the stop bits. |
| Flow Control | Specify the method of data flow between the computer and the printer. |
| Parity | Specify the parity. |

10 The "Ethernet Settings" screen appears. Configure the IP Address of the printer and click the (Next) button. Proceed to Step 11.

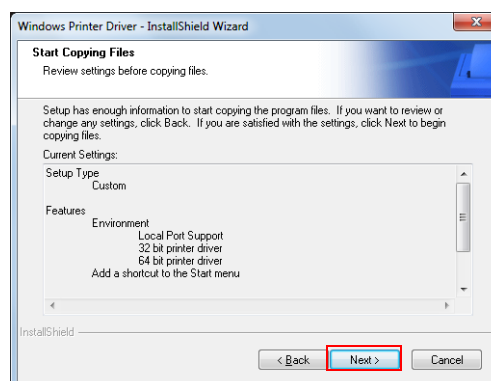
| Setting | Description |
|--------------|---|
| Printer name | The printer name you entered at Step 7 is displayed. This cannot be changed. |
| IP address | Enter the printer IP address. To find the information about IP Address of the printer, see the "ST-EP4 Network Setting Utility User's Manual." |


- 11** The display returns to the “Printer Configuration” screen. All the printer drivers, configured between Step 6 to Step 10, appear in the list. To install multiple printer drivers, repeat Step 5 to Step 10. To install the same printer driver multiple times, click the (Copy) button. When the settings of the printer drivers are finished, click the (Next) button.
- 12** The “Select Features” screen appears. Select the features of the Printer Driver you want to install, and then click the (Next) button. The following features are available.



| Features | | Description |
|-----------------------------------|-----------------------|---|
| Environment | 32 bit printer driver | Supports printer driver for 32 bit version OS. Selectable when installing from 64 bit version OS. |
| | 64 bit printer driver | Supports printer driver for 64 bit version OS. Selectable when installing from 32 bit version OS. |
| Add a shortcut to the Start menu. | | Shortcut icon to the Printer Driver will be added in the Start menu. Default setting : checked |

- 13** The “Start Copying Files” screen appears. See "Current Settings" to confirm the settings to be installed and then click the (Next) button.



- 
-
- 14** The Printer Driver is installed.
 - 15** The “InstallShield Wizard Complete” screen appears. When you click the (Finish) button, the installation ends.
 - 16** In (Start) - (Control Panel) - (Hardware and Sound) - (Devices and Printers), check that the specified printer driver is correctly installed.
([Reference page of other OS.](#))

Maintenance after Installing the Printer Driver

Maintenance procedures after the Printer Driver is installed.

- Adding the printer driver
- Uninstalling the printer driver
- Replacing a printer
- Changing the port settings of the printer driver

Adding the printer driver

You can add the printer driver you want to use among drivers for all models by following the steps below.



You cannot add the printer drivers directly from [Start] - [Control Panel] - [Hardware and Sound] - [Devices and Printers]. ([Reference page of other OS.](#))

- 1 If "Enable Plug & Play installation for all printer models" is not checked during minimum or custom installation, double-click the icon of installer for the Printer Driver.
If the Printer Driver is installed through standard installation, go to (Start) - (All Programs) - (Thermal Printer) - (ST-EP4) - (Windows Printer Driver) and open (Change or delete Windows Printer Driver, or create a silent installer for Windows Printer Driver.)
- 2 The "Welcome" screen appears. Then select "Custom" and click the (Next) button.
- 3 The "Printer Configuration" screen appears. Click the (Add) button to select the model to install.

- 4** The “Add Printer” screen appears. Configure the printer driver and port to use, and click the (Next) button.

| Setting | Description |
|------------------------|--|
| Select driver | Select the printer driver to be installed. |
| Printer name | The printer driver name. This is changeable. Do not use Unicode/2-byte characters for the name. |
| Communication | Select the type of interface to connect the computer and printer. Create a Parallel port: Proceed to Step 5. Create a Serial port: Proceed to Step 6 Create an Ethernet port: Proceed to Step 7. Create a USB port: Proceed to Step 8. |
| Set as Default Printer | Check when configuring the printer as that normally used from the Windows applications. |

- 5** The “Parallel Port Settings” screen appears. Configure the settings of the Parallel port and click the (Next) button. Proceed to Step 8.

| Setting | Description |
|--------------|--|
| Printer name | The printer name you entered at Step 4 is displayed. This cannot be changed. |
| LPT Port | Specify the number of parallel port used for connecting the printer. Usually, the port number is automatically displayed and no setting is required. |

- 6** The “Serial Port Settings” screen appears. Configure the settings of the Serial port and click the (Next) button. Proceed to Step 8.

| Setting | Description |
|--------------|--|
| Printer name | The printer name you entered at Step 4 is displayed. This cannot be changed. |
| COM Port | Specify the number of serial port used for connecting the printer. |
| Baud Rate | Specify the baud rate. |
| Data Bits | Specify the data bits. |
| Stop Bits | Specify the stop bits. |
| Flow Control | Specify the method of data flow between the computer and the printer. |
| Parity | Specify the parity. |

- 7** The “Ethernet Settings” screen appears. Configure the IP Address of the printer and click the (Next) button. Proceed to Step 8.

| Setting | Description |
|--------------|---|
| Printer name | The printer name you entered at Step 4 is displayed. This cannot be changed. |
| IP address | Enter the printer IP address. To find the information about IP Address of the printer, see the “ST-EP4 Network Setting Utility User's Manual.” |

- 8** The display returns to the “Printer Configuration” screen. All the printer drivers, configured between Step 4 to Step 7, appear in the list.
To install multiple printer drivers, repeat Step 3 to Step 7. To install the same printer driver multiple times, click the (Copy) button.
When the settings of the printer drivers are finished, click the (Next) button.

- 9** The “Select Features” screen appears. Select the features of the Printer Driver you want to install, and then click the (Next) button. The following features are available.

| Features | | Description |
|-----------------------------------|-----------------------|--|
| Environment | 32 bit printer driver | Supports printer driver for 32 bit version OS. Selectable when installing from 64 bit version OS. |
| | 64 bit printer driver | Supports printer driver for 64 bit version OS. Selectable when installing from 32 bit version OS. |
| Add a shortcut to the Start menu. | | Shortcut icon to the Printer Driver will be added in the Start menu. Default setting : checked |

- 10** The “Start Copying Files” screen appears. Confirm the printer driver to be installed which is displayed in “Current Settings” and then click the (Next) button.
- 11** The printer driver added in the list at Step 8 is installed.
- 12** The “Maintenance Complete” screen appears. When you click the (Finish) button, the process of installing the printer driver ends.

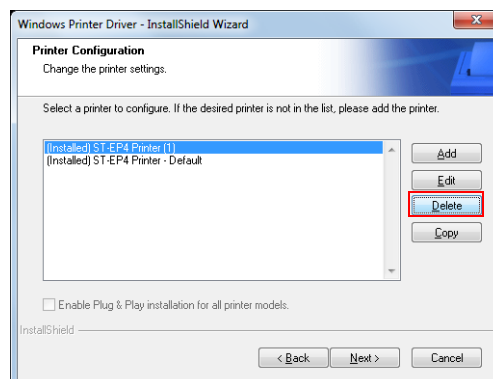
Uninstalling the printer driver

To uninstall printer driver(s) out of use when multiple drivers are installed, follow the steps below.

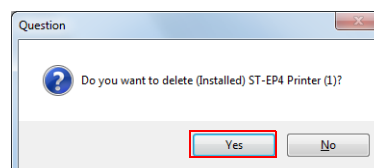


To uninstall all printer drivers, refer to ["Uninstallation" on page 24](#).

- 1** Select from (Start) - (All Programs) - (Thermal Printer) - (ST-EP4) - (Windows Printer Driver) and open (Change or delete Windows Printer Driver, or create a silent installer for Windows Printer Driver.)
- 2** The "Welcome" screen appears. Then select "Custom" and click the (Next) button.
- 3** The "Printer Configuration" screen appears. Select the printer driver from the list which you want to remove, and click the (Delete) button.



- 4** A screen appears to confirm the remove action. Click the (Yes) button.



- 5** The display returns to the "Printer Configuration" screen. Click the (Next) button.
- 6** The "Select Features" screen appears. Features installed on your computer are automatically checked. Uncheck the feature to uninstall. Click the (Next) button.
- 7** The "Start Copying Files" screen appears. Confirm the printer driver to be removed which is displayed in "Current Settings" and then click the (Next) button.
- 8** The printer driver removed in Step 3 to Step 5 will be removed.
- 9** The "Maintenance Complete" screen appears. When you click the (Finish) button, the process of uninstalling the printer driver ends.

Replacing a printer

When you replace the printers equipped with the same interface, beware of the following.

- When a logo is set for the printer, set up the logo again.
- If the memory switch is changed, see the "ST-EP4 Utility User's Manual."

Replacement configurations for each interface are as follows:

| Interface | Description |
|-----------|--|
| Parallel | No configuration is required after replacement. |
| Serial | Set the Serial connection setting using the memory switch. |
| USB | No configuration is required after replacement. |
| Ethernet | Set the same IP address as the previous printer. |

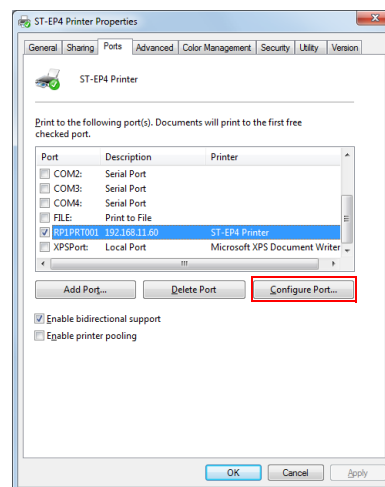
Changing the port settings of the printer driver

Change the port settings of the printer driver in the following cases:

- Serial interface:
Serial port, serial connection conditions, Busy Condition (when coexisting with other driver), power-off determination time-out time
- Ethernet interface:
IP address, other communication conditions

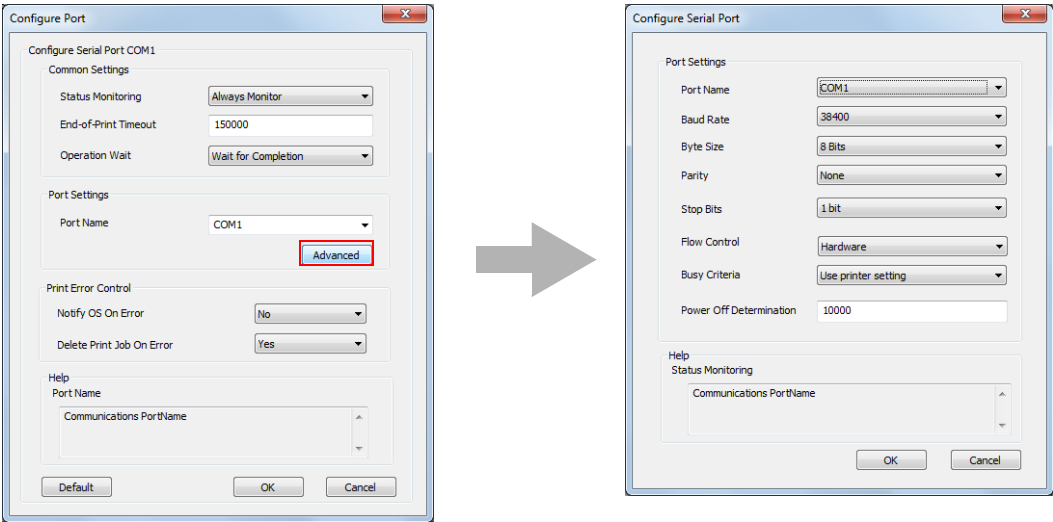
Change the settings in the following procedure:

- 1** Select from (Start) - (Control Panel) - (Hardware and Sound) and open (Printers) and then right click the target printer driver and select (Printer Properties) ([Reference page of other OS.](#)).
- 2** The property screen of the printer appears. Select the (Ports) tab and then click the (Configure Port...) button.



3 The “Configure Port” screen appears. Change the port settings.

- For serial:
The common settings and print error control can be configured. Clicking the (Advanced) button displays the "Configure Serial Port" screen.

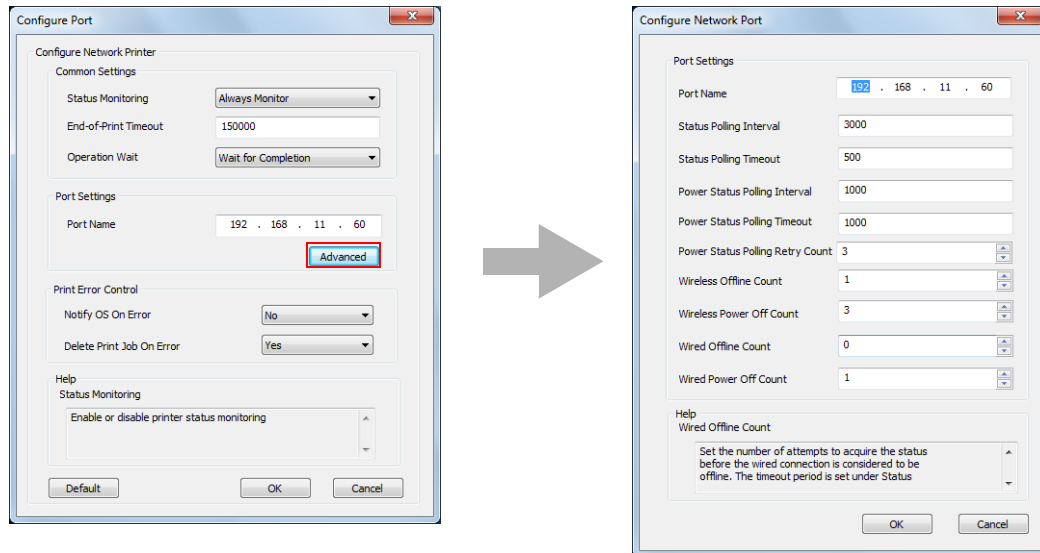


Major settings:

| Setting | Description |
|--|--|
| Port Name | Change the COM port used for connecting the printer. |
| Connection condition | Set Baud Rate, Byte Size, Parity, Stop Bits and Flow Control. |
| Busy Criteria (Default : Use Pprinter setting) | If printing is performed with the driver switched when coexisting with OPOS, restarting the printer may be demanded. In this case, select "Use printer setting". |
| Power Off Determination (Default : 10000(10Second)) | To make the application to determine earlier, change the setting. |

- For Ethernet:

The common settings and print error control can be configured. IP address can also be changed. Clicking the (Advanced) button displays the Configure Network Port screen to configure the detailed network settings. Configure the settings by referring to help.



- 4 The display returns to the Properties screen. When you click the (OK) button, the changes you made becomes effective.

Silent Installation

This chapter describes the procedures for the Silent Installation.

What Is a Silent Installation?

The silent installation is a method that copies the existing Printer Driver setup environment to other computers without user operation. There are the following two methods.

❑ Using a silent installation package (*.exe)

Create the silent installation package on the copy source computer.

- Executing this file on another computer enables you to install the minimum environment for operating the Printer Driver from all the environment of the copy source computer.
- When the silent installation is executed with this file, you cannot create the silent installation package or the script file for the silent installation, or add another printer.

❑ Using a script file (*.inf) for the silent installation

Create the script file for the silent installation on the copy source computer.

- Executing this file and the Printer Driver file (ST_EP4PrinterDriver.exe) on another computer enables you to install the complete Printer Driver environment of the copy source computer.
- In the environment in which the silent installation is executed with this file, you can create the silent installation package or the script file for the silent installation, and you can also add another printer.

With this function, you can incorporate the Printer Driver installation into a batch file, a recovery disc for the OS, and an installer of an application.

Also, you can add the command options for the silent installation to enable the following functions.

- Notification when completing the installation
- Restart setting after completing the installation
- Upgrade installation settings
- Installing without displaying screens.



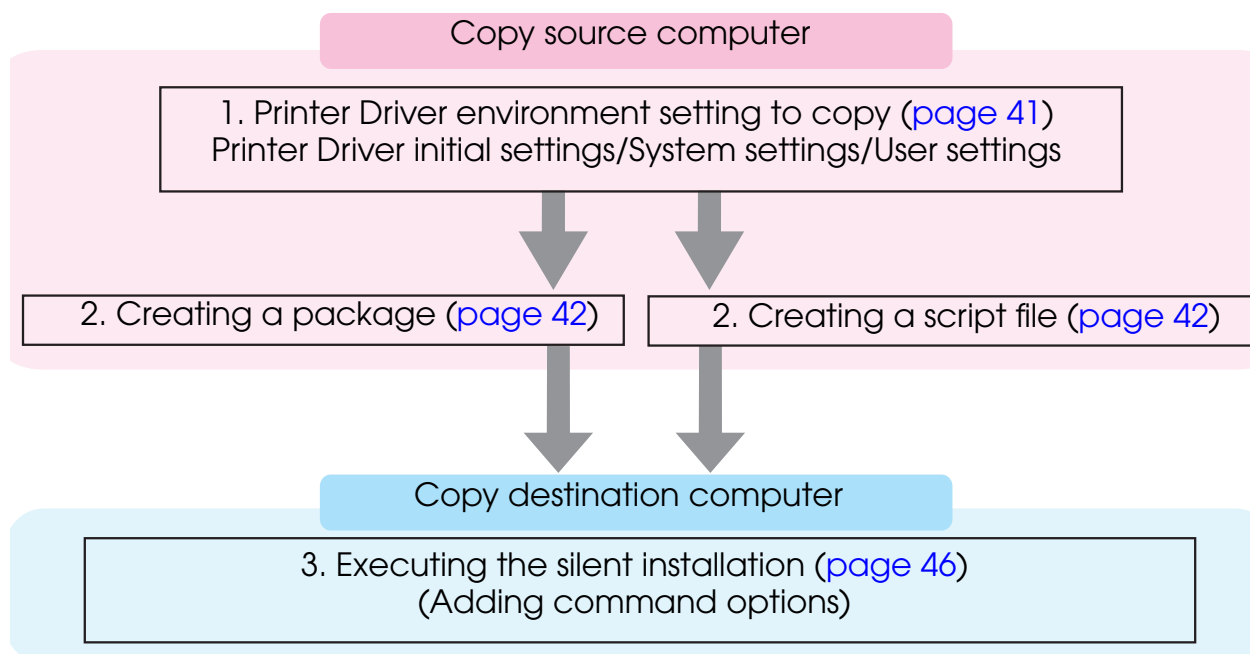
- To use the silent installation, Internet Explorer version 4.0 or later is required.

This method is useful especially in the following cases:

- You can make the same setting to multiple computers easily.
- Even computers with no displays can be set up.
- In case of printing trouble, the Printer Driver environment of the computer with an error can be recreated on another computer by using the script file for the silent installation of that computer, and it improves the service and maintenance function. (In the environment in which the silent installation is executed with the silent installation package, the script file for the silent installation cannot be created.)

Flow of the Silent Installation

The flow of the silent installation is described below.



Setting the Printer Driver Environment To Be Copied

Create the Printer Driver environment for the silent installation on the copy source computer. Following Printer Driver environment to be copied can be selected.

- Printer Driver initial setting
This is the setting when installing the Printer Driver
- System setting
This is the system setting for the printer.
- User setting
This is the user setting for the printer. The same setting as that of the copy source computer.

Printer Driver Setting

When copying the user setting or system setting of the printer, see the “Printer Manual” to make settings.

Making the system setting

Select (Start) - (Control Panel) - (Hardware and Sound) - (Devices and Printers), right-click the printer, and select (Printer properties) - (Advanced) - (Printing Defaults) to make settings. ([Reference page of other OS.](#))

Making the user setting

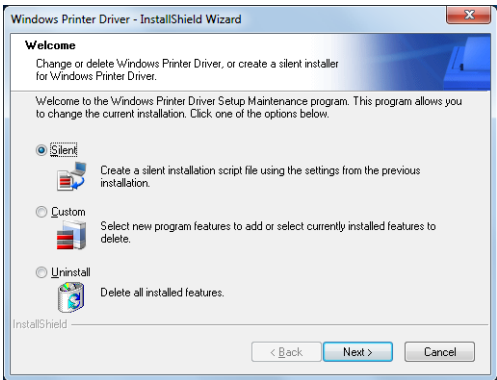
Select (Start) - (Control Panel) - (Hardware and Sound) - (Devices and Printers), right-click the printer, and select (Printer properties) - (General) - (Printing Preferences) to make settings. ([Reference page of other OS.](#))

Creating a Package or Script file

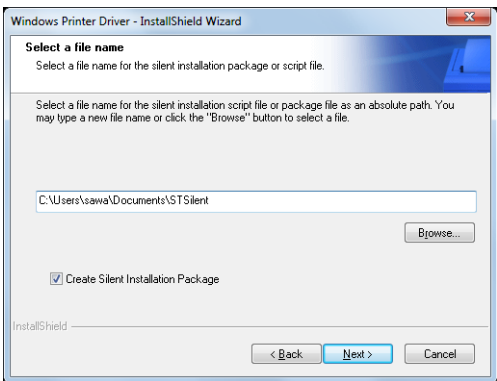
Create the silent installation package or the script file for the silent installation. First, confirm which Printer Driver environment to copy on the copy source computer. (See ["Setting the Printer Driver Environment To Be Copied" on page 41.](#))

Follow the steps below.

- 1 Select from (Start) - (All Programs) - (Thermal Printer) - (ST-EP4) - (Windows Printer Driver) and open (Change or delete Windows Printer Driver, or create a silent installer for Windows Printer Driver.)
- 2 The "Welcome" screen appears. Select "Silent", then click the (Next) button.



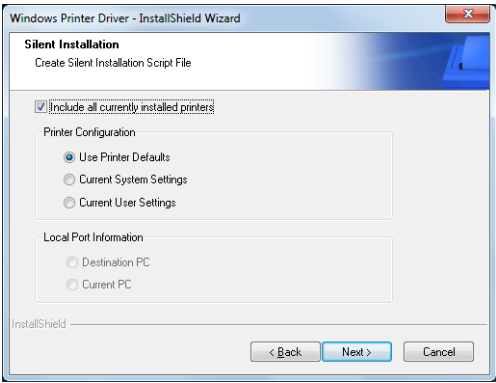
- 3 The "Select a file name" screen appears. Specify a destination folder and file name, and specify which type of file to create. Click the (Next) button.



| Setting | Description |
|---|---|
| Location to save the file and file name | Specify a destination and a file name for the file to be created. |

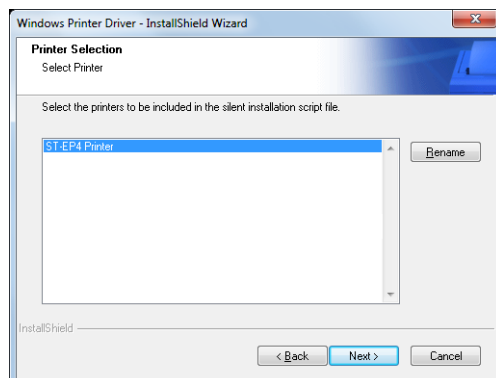
| Setting | Description |
|------------------------------------|---|
| Create silent installation package | <ul style="list-style-type: none">• Check when you want to create a silent installation package.• Uncheck when you want to create a script file for the silent installation. (Checked by default.) |

- 4** The “Silent Installation” screen appears. Select the setting you want to copy from (Printer Configuration), and select the printer to be installed. If you do not want to select all the printers installed in the copy source computer with the Printer Driver, uncheck (Include all currently installed printers). Click the (Next) button.
- The setting in (Printer Configuration) is the default value for the copy destination printer. When installing multiple printers, you cannot change each printer individually.
 - Go to Step 7 when you check (Include all currently installed printers).

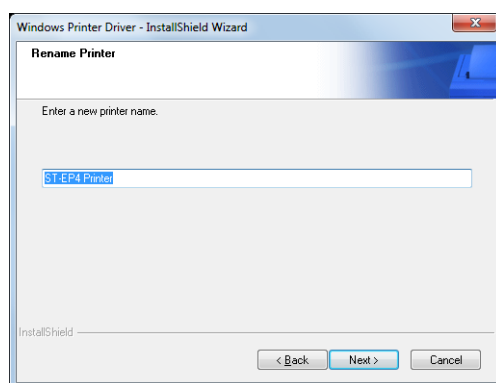


| Setting | Description |
|--|---|
| Include all currently installed printers | If checked, all the ST-EP4 printers installed in the copy source computer are selected. If unchecked, each printer installed in the copy source computer can be selected. (Checked by default.) |
| Printer Configuration | Select the printer setting that you want to copy. |
| Use Printer Defaults | Setting when the Printer Driver is installed is used. |
| Current System Settings | System settings of the printer You can check them by selecting (Properties) - (Advanced) - (Printing Defaults). |
| Current User Settings | User Settings of the printer You can check them by selecting (Properties). |
| Local Port Information | Not available. |

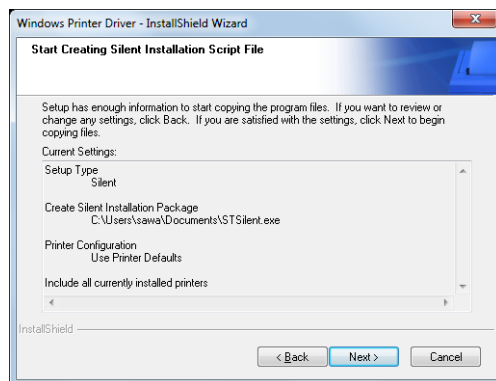
- 5** "Printer Selection" screen appears. Select the printer driver you want to copy. To change the printer name, click the (Rename) button. If you do not want to change the printer name, go to step 7 by clicking the (Next) button.



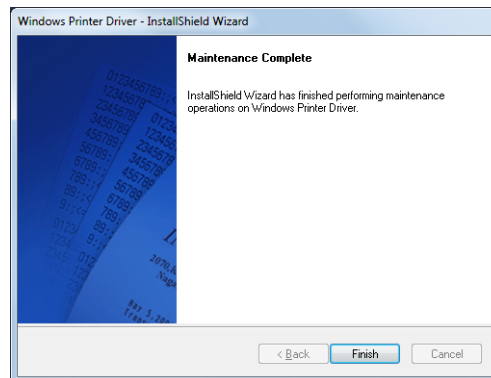
- 6** The "Rename Printer" screen appears. Change the printer driver name, and click the (Next) button.



- 7** The "Start Creating Silent Installation Script File" screen appears. Make sure that the file information displayed in "Current Settings" is correct and click the (Next) button to create the silent installation package or the script file for the silent installation.



- 8 The “Maintenance Complete” screen appears. Click the (Finish) button. The silent installation package or the script file for the silent installation has been created in the destination folder specified in Step 3.



Executing the Silent Installation

You can execute the silent installation using the following methods.

- Execute the silent installation package on the copy destination computer.
- Copy the script file for the silent installation and the Printer Driver file, and execute a command from the command prompt.
- Develop a batch file or an application for the Printer Driver installation, and execute it.

How to execute the Silent Installation

Following the procedures below to execute the silent installation.

Installing using the silent installation package

Copy the silent installation package to the copy destination computer, and execute the following command.

```
>[Package File Name(specified with the full path)]
```

Ex: D:\STEP4>STSilent.exe

When checking the result of silent installation using a package file, check that the specified printer driver is correctly installed in [Start] - [Control Panel] - [Hardware and Sound] - [Printers].

Installing using the script file for the silent installation

Copy the script file for the silent installation and the Printer Driver file, and execute the following command.

```
>[ST_EP4PrinterDriver.exe (specified with the full path)]  
    [/s /f1 "STSilent.inf (specified with the full path)"]
```

Ex: D:\STEP4>ST_EP4PrinterDriver.exe /s /f1"D:\STEP4\STSilent.inf"

Checking the Installation Result

The silent installation results of the silent installation package/script file for the silent installation can be checked in the “Result Code” of “STSetup” which is created in the same location as that of the package or the file.

The contents of “Result Code” are as follows.

| Result Code | Description |
|-------------|--|
| 0 | Completed successfully |
| -3 | The Printer Driver has already been installed. |
| 2 | The files needed for silent installation could not be found. |
| 1151 | The OS does not support the Printer Driver. |
| 1223 | The silent installation was cancelled by the user. |

Command Options

The command options of the silent installation and how to make settings are described below.



You can use the command options in combination.

/s /f1 : Silent installation using the script file

Using this command option enables you to execute the silent installation using the script file for the silent installation.

For more details, see ["Installing using the script file for the silent installation" on page 46](#).

/uninstall : Silent Uninstallation

Using this command option enables you to uninstall using the command line.

Example

```
D:\STEP4\ST_EP4PrinterDriver.exe /s /uninstall
```



When "/s" is not attached, the uninstallation screen is displayed.

/d : Display the silent installation result in a dialog

Using this command option enables you to display the silent installation result in a dialog when the installation is completed.

Example

Package File

```
D:\STEP4\STSilent.exe /d
```

Script File

```
D:\STEP4\ST_EP4PrinterDriver.exe /s /f1"D:\STEP4\STSilent.inf" /d
```

/w /m :

Display a window message of the silent installation completion

Adding the Windows handle and message ID to the command enables you to display a window message of the silent installation completion.

Example

In the example below, Windows handle is 0x6789abc, and message ID is 0x0501

Package File

```
D:\STEP4\STSilent.exe /w6789abc /m0501
```

Script File

```
D:\STEP4\ST_EP4PrinterDriver.exe /s /f1"D:\STEP4\STSilent.inf"  
/w6789abc /m0501
```

/r : Restart setting after the installation

Using this command option enables you to make the restart setting of OS after the silent installation is completed.

Example when you want to restart

Package File

```
D:\STEP4\STSilent.exe /rY
```

Script File

```
D:\STEP4\ST_EP4PrinterDriver.exe /s /f1"D:\STEP4\STSilent.inf" /rY
```

Example when you do not want to restart

Package File

```
D:\STEP4\STSilent.exe /rN
```

Script File

```
D:\STEP4\ST_EP4PrinterDriver.exe /s /f1"D:\STEP4\STSilent.inf" /rN
```

/l : Specify the install log file

Using this command option enables you to specify the output destination of the installation log (STSetup.log). Normally this is output in the Windows folder.

Example

Package File

```
D:\STEP4\STSilent.exe /l"D:\STEP4\log.txt"
```

Script File

```
D:\STEP4\ST_EP4PrinterDriver.exe /s /f1"D:\STEP4\STSilent.inf"
/l"D:\STEP4\log.txt"
```

/P : Specify the destination IP address

Using this command option enables you to specify the IP address of the connection destination of the printer driver. This command is available during Ethernet connection.

Example

Package File

```
D:\STEP4\STSilent.exe /P192.168.192.168
```

Script File

```
D:\STEP4\ST_EP4PrinterDriver.exe /s /f1"D:\STEP4\STSilent.inf" /
P192.168.192.168
```

