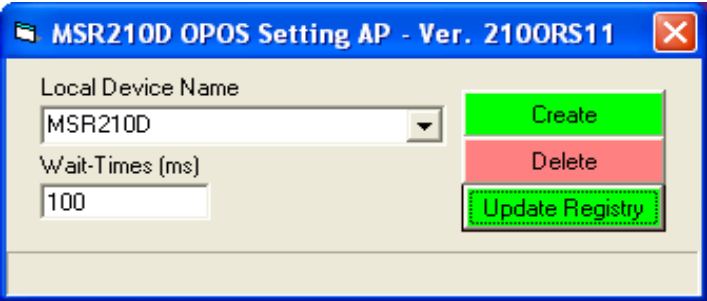
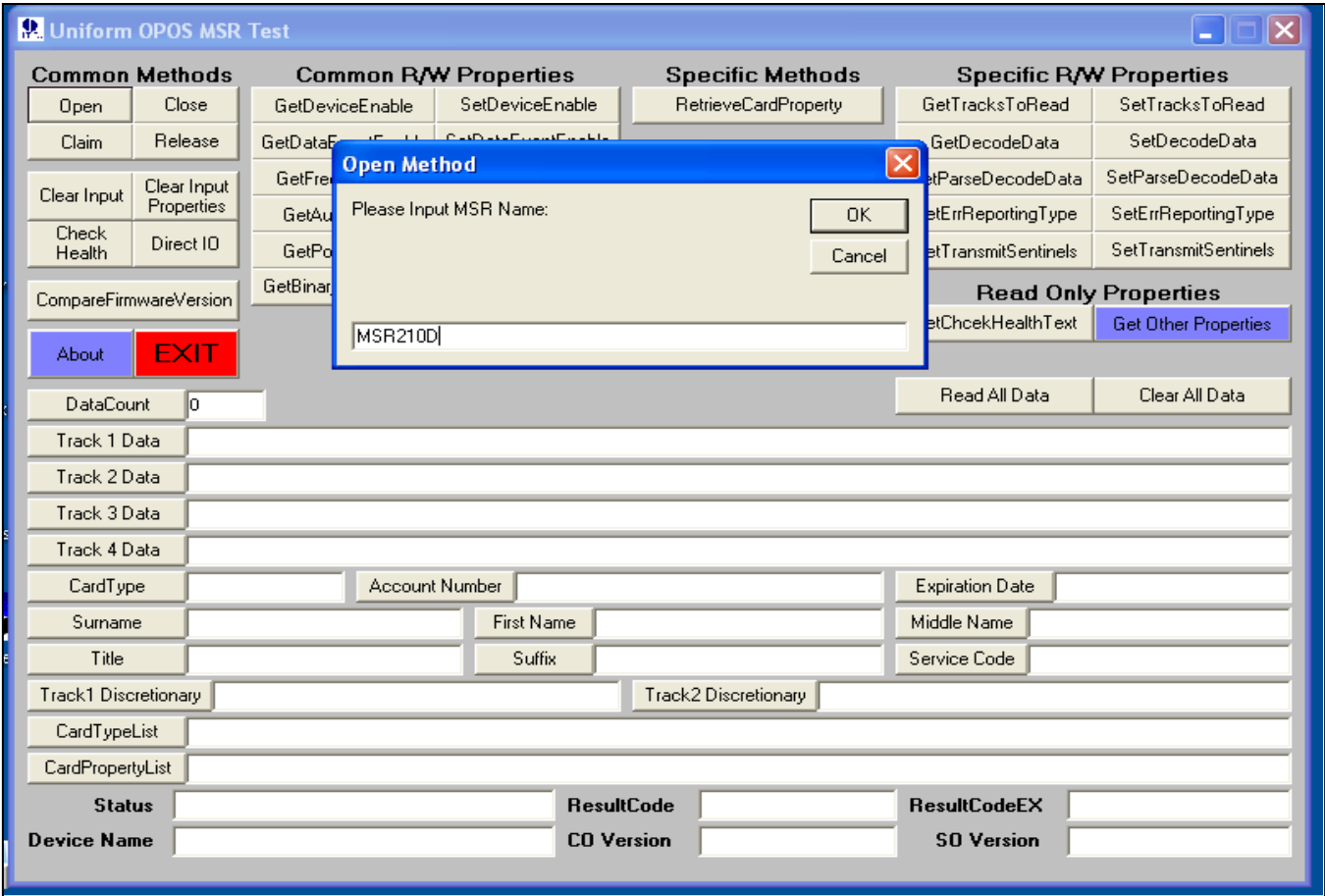


Installation and test Guide of OPOS driver

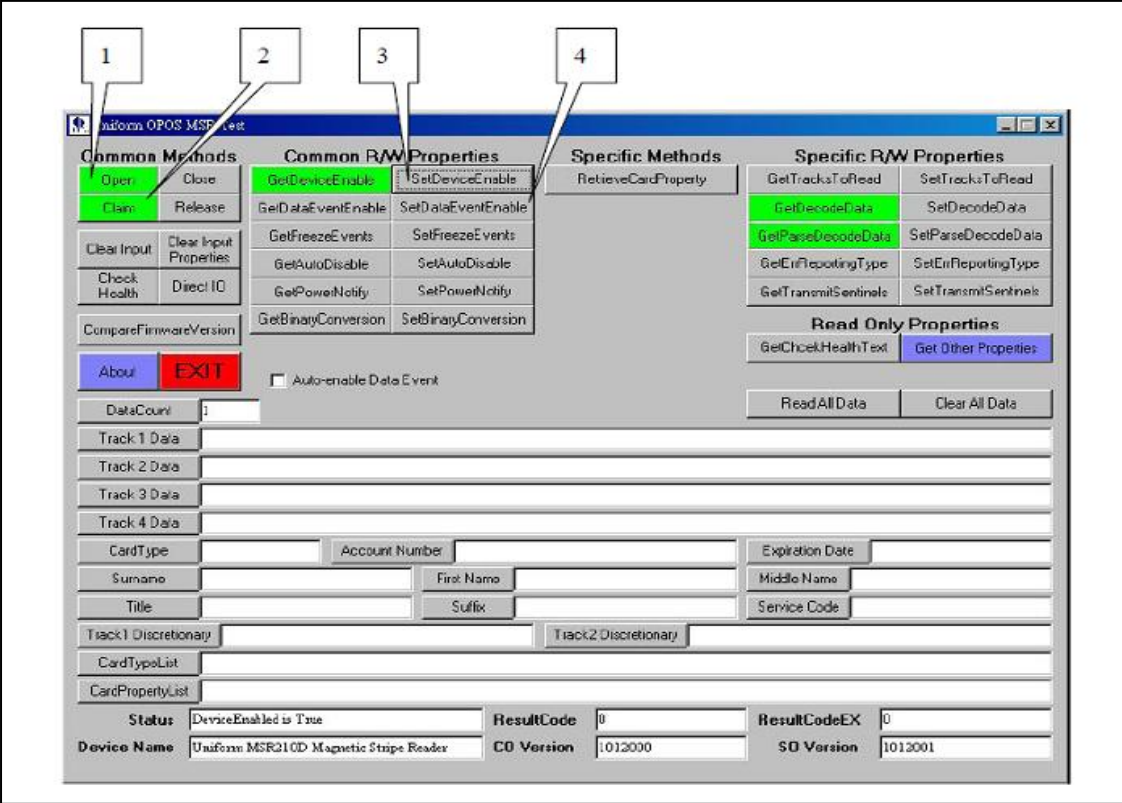
- 1. Unzip the file
- 2. Open the file and inside it has two folders:
  - a) Opos Driver
  - b) Opos Demo Ap
- 3. Install OPOS driver first, and Opos Demo Ap later
- 4. After done with installation, run the MSR210D OPOS setting **Ver. 2100RS11**
- 5. Type preferred device name in "Local Device Name" and click "Create". The default device name is "MSR210D"
- 6. Click "Update Registry"



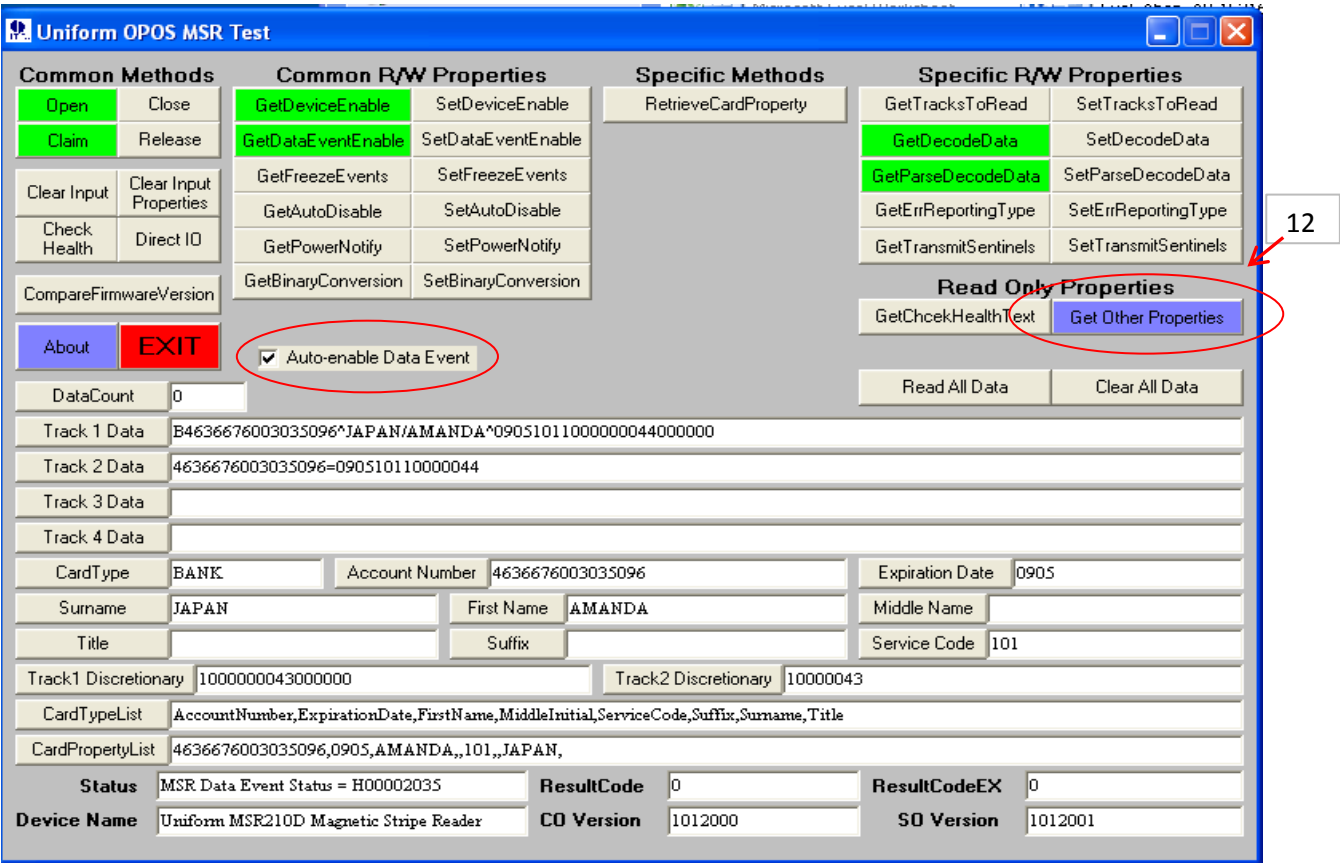
- 7. After you done with Opos setting run the "OPOS MSR TEST"
- 8. Click the "Open" and put MSR name same as the local device name at "MSR210D OPOS Setting AP" window and click "OK"



9. Click 2 - 4 :
- a) No 2 "Claim"
  - b) No 3 "SetDeviceEnable"
  - c) No 4 "SetDataEventEnable"



10. Check "Auto-enable data event"
11. Slide the card and it is going to show on screen below



## 12 How to view OPOS version

Click "Get Other Properties" (See Above)

It will open window "OPOS MSR Read Only Properties" (See Below)

OPOS Ver. will show under "Service Object Description"

**OPOS MSR Read Only Properties**

Common Read Only Properties

CapCompareFirmwareVersion	True	Claimed	True
CapPowerReporting	OPOS_PR_NONE	OpenResult	Success
CapStatisticsReporting	False	PowerState	OPOS_PS_UNKNOWN
CapUpdateFirmware	False	State	OPOS_S_IDLE
CapUpdateStatistics	False		
ControlObjectDescription	<del>OPOS MSR Control 1.12.000 [Public, by CRM/RCS-Dayton]</del>		
ServiceObjectDescription	MSR210D OPOS Service Object Ver.210OPS2D, (C) 2013 Uniform		
DeviceDescription	Uniform MSR210D, USB HID Keyboard		

MSR Specific Read Only Properties

CapCardAuthentication	None	AdditionalSecurityInformation	None
CapDataEncryption	MSR_DE_NONE	CardAuthenticationData	None
CapDeviceAuthentication	MSR_DA_NOT_SUPPORTED	CardAuthenticationDataLength	0
CapISO	True		
CapISOOne	True		
CapISOTwo	False		
CapTrackDataMasking	False		
CapTransmitSentinels	True		
CapWritableTracks	MSR_TR_NONE		

OK